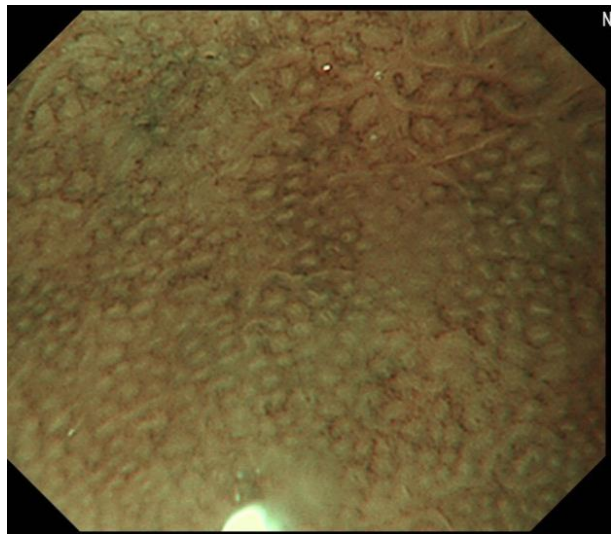


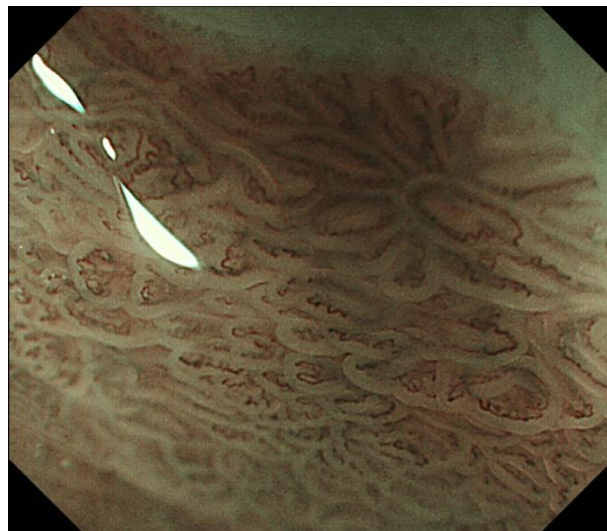


Usefulness of endoscopic brushing and magnified endoscopy with narrow band imaging (ME-NBI) to detect intestinal phenotype in columnar-lined esophagus

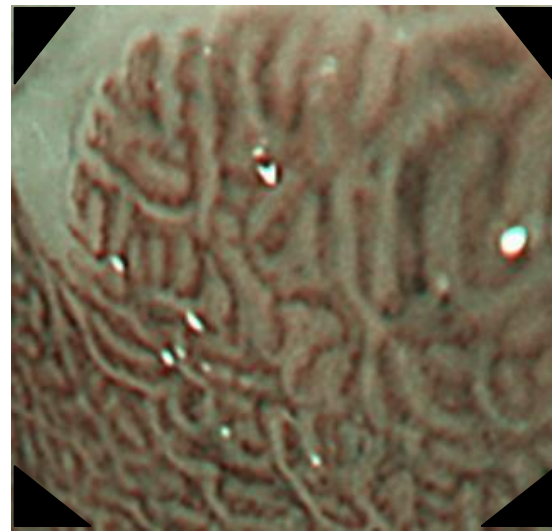
著者	村尾 高久
著者(英)	Murao Takahisa
学位名	博士(医学)
学位授与機関	川崎医科大学
学位授与年度	平成25年度
学位授与年月日	2014-03-13
学位授与番号	35303甲第601号
URL	http://doi.org/10.15111/00000008



small round pattern

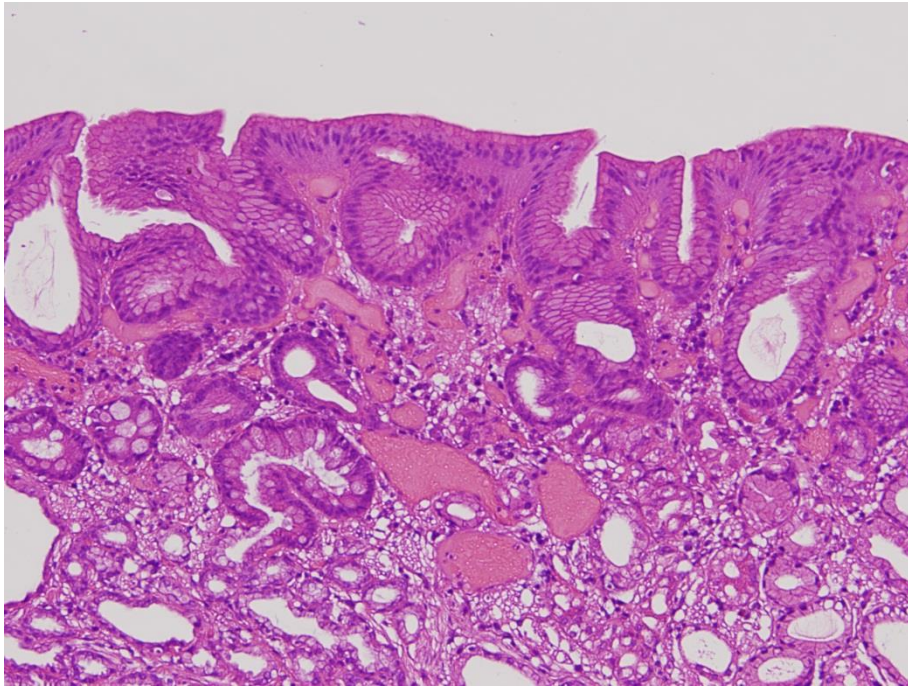


long oval pattern

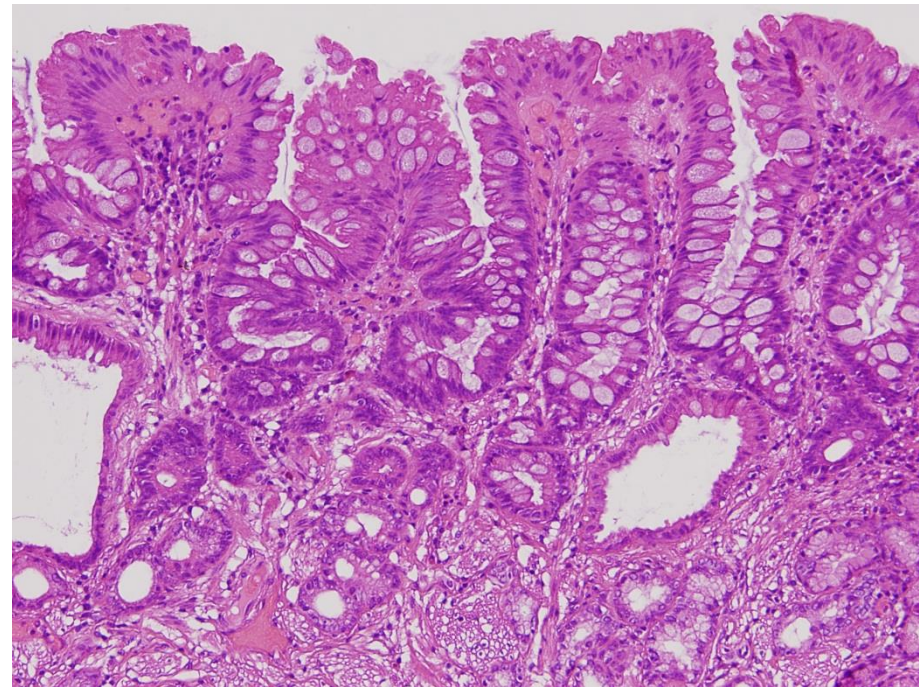


tubular/villous pattern

Fig. 1



long oval pattern



tubular pattern

Fig. 2

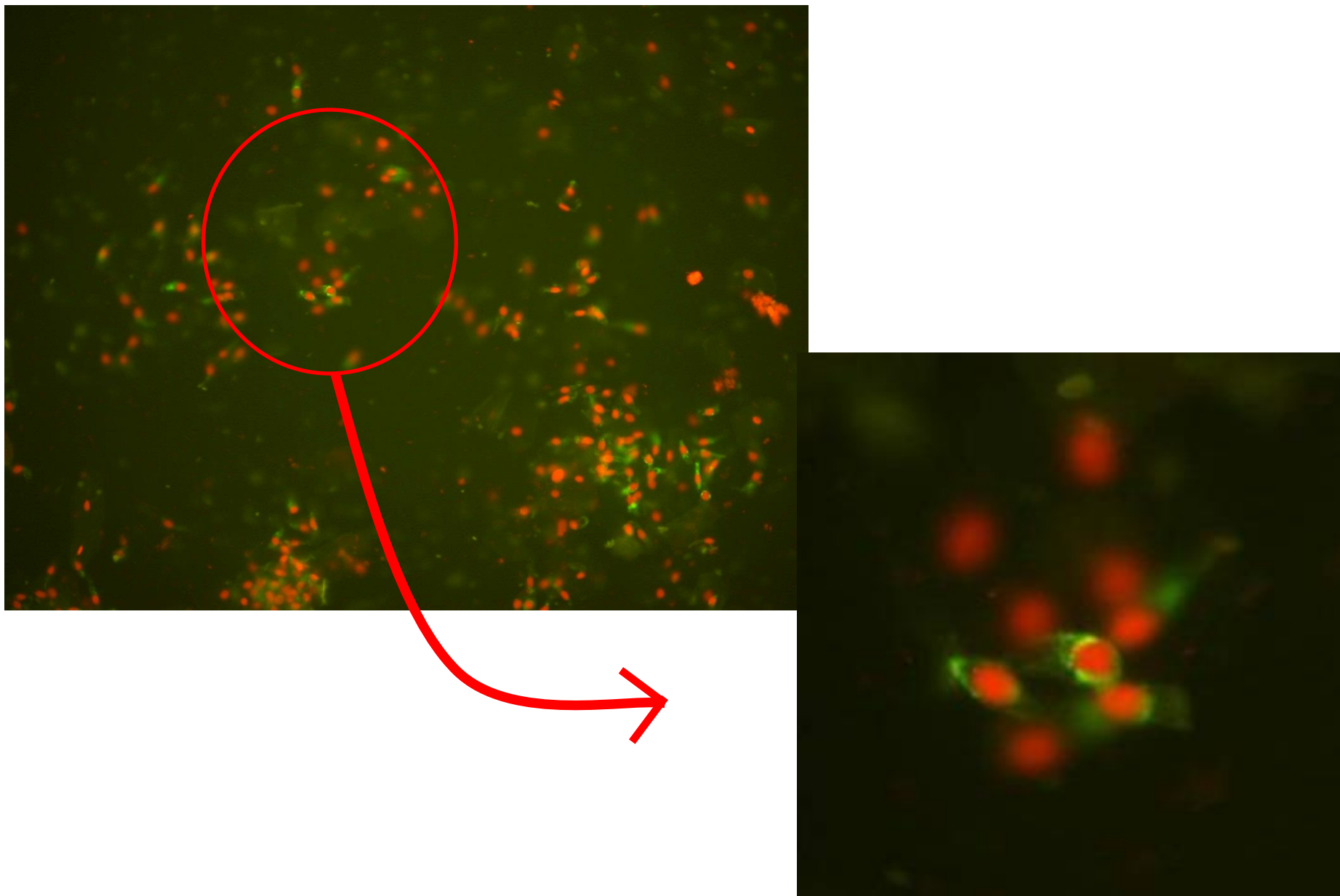


Fig. 3

MUC2

CDX2

MUC5AC

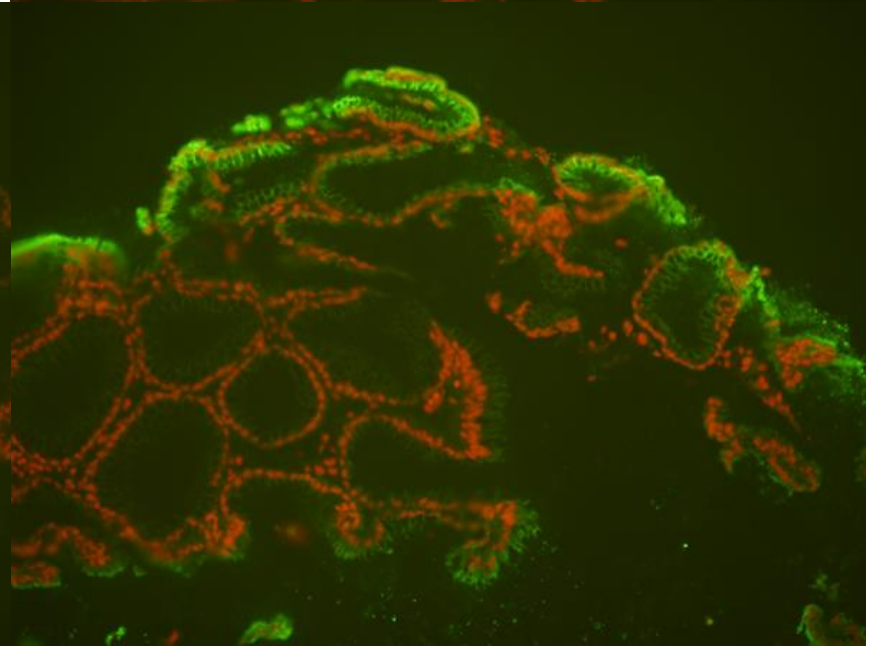
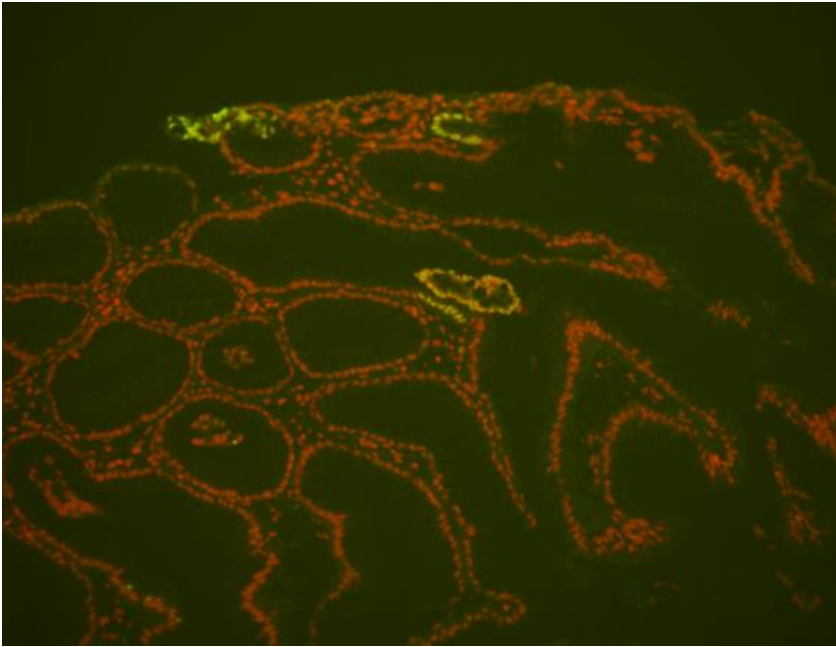
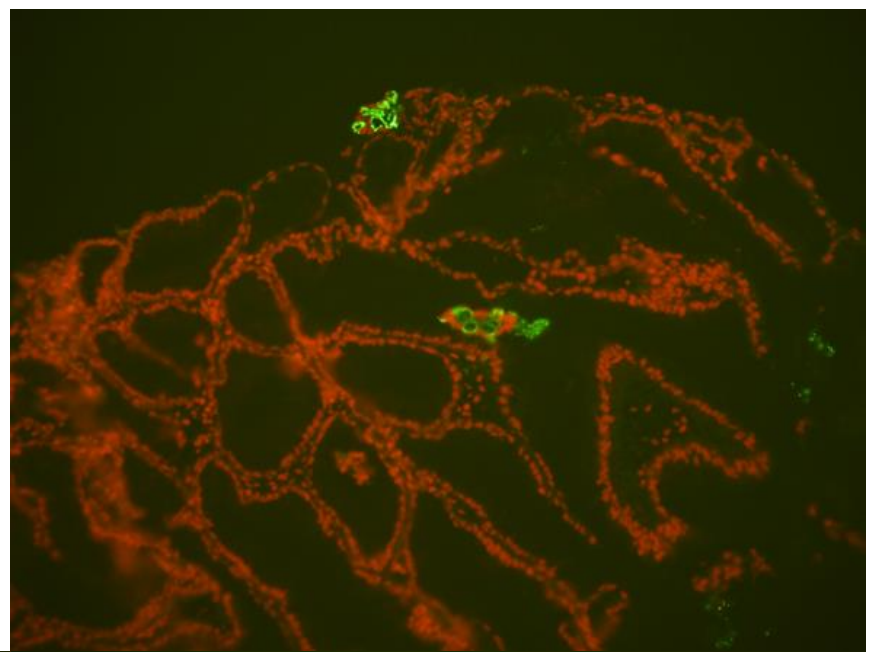


Fig. 4

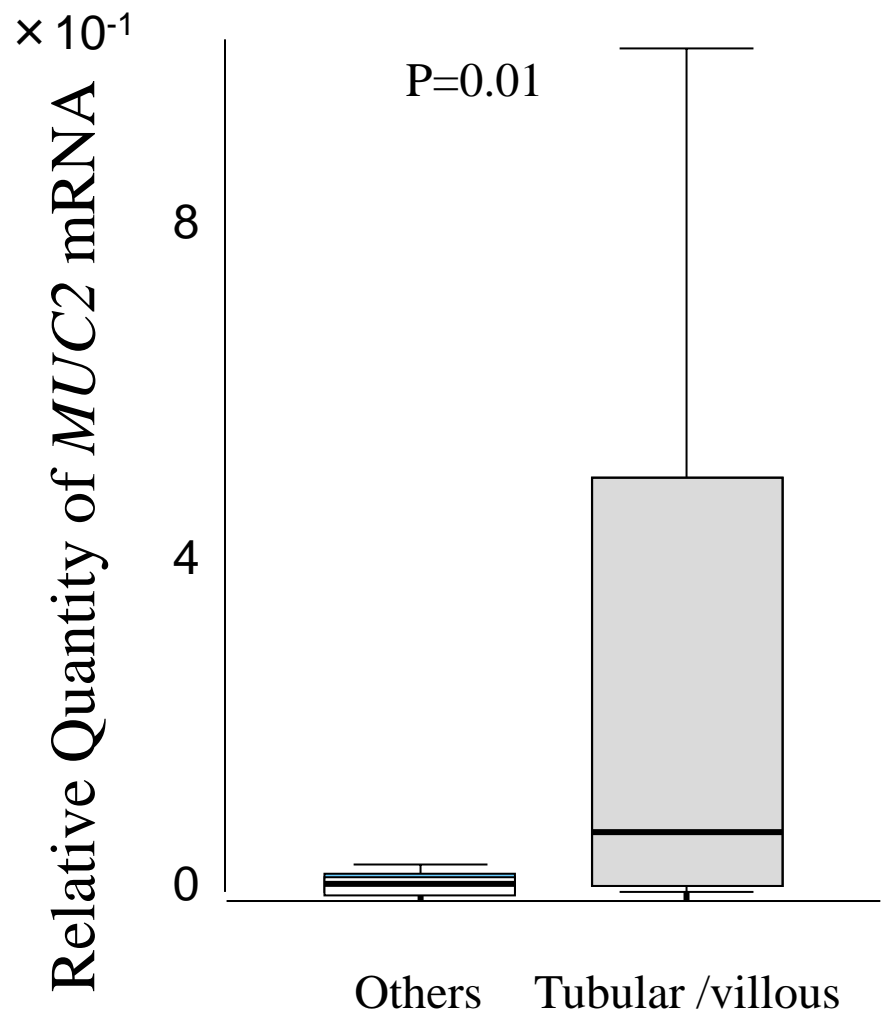
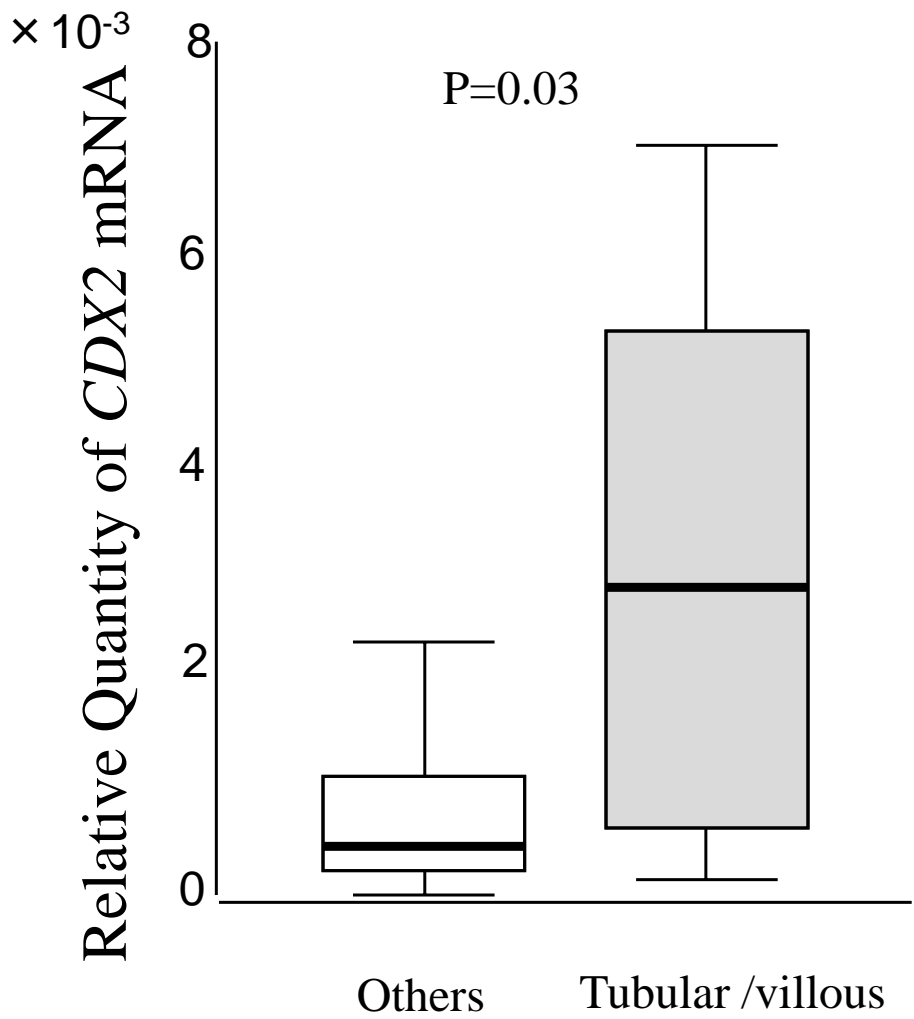


Fig. 5

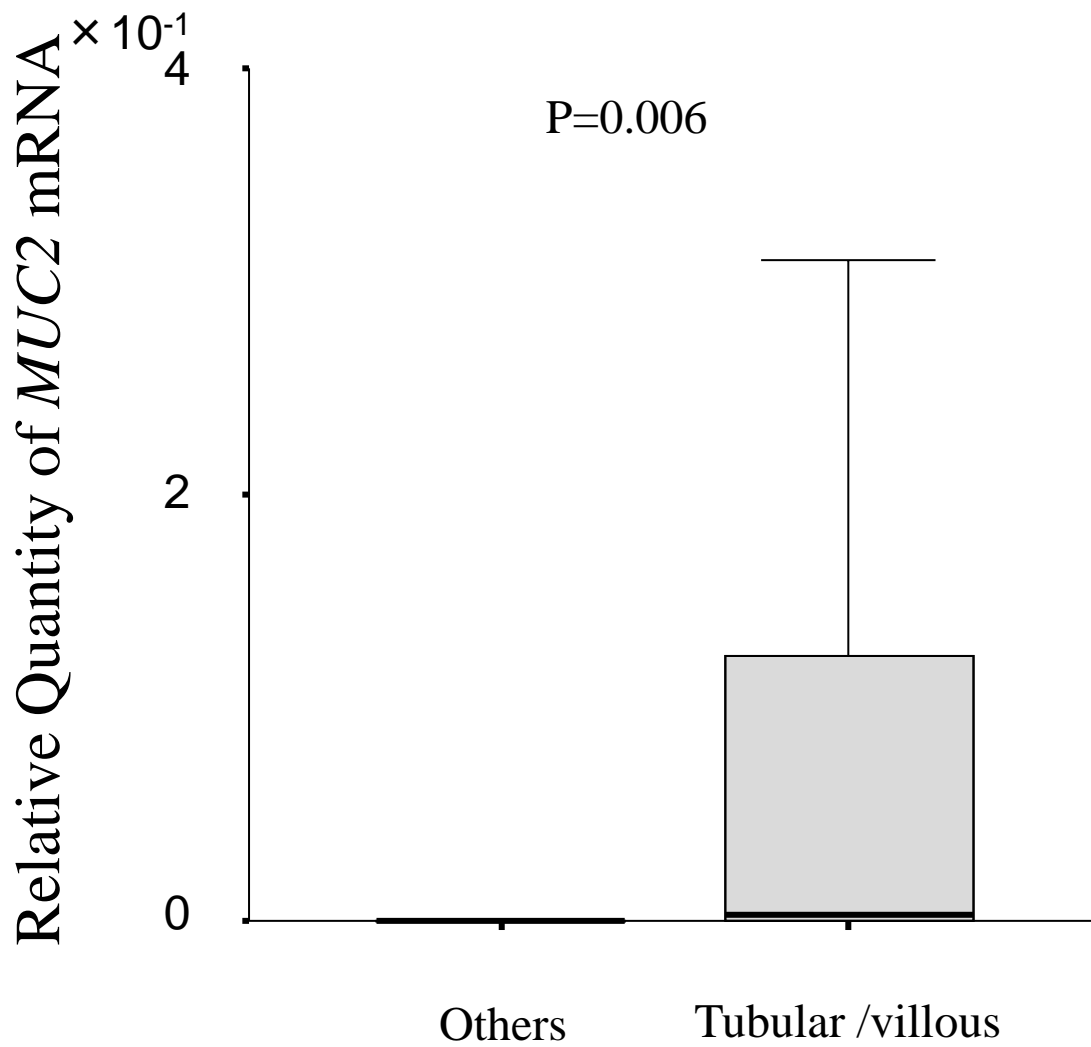


Fig. 6