

## Involvement of INK4 Family Cyclin-dependent-kinase Inhibitor Genes in Hematological Malignancies

Takemi OTSUKI, Elaine S. JAFFE<sup>\*\*</sup>, Ayako UEKI,  
Yoshihito YAWATA<sup>\*</sup> and Mark RAFFELD<sup>\*\*</sup>

*Department of Hygiene,*

*\*Division of Hematology, Department of Medicine,  
Kawasaki Medical School, Kurashiki 701-01, Japan*

*\*\*Hematopathology Section, Laboratory of Pathology,  
National Cancer Institute, National Institutes of Health,  
Bethesda, Maryland 20892, USA*

*Accepted for publication on September 25, 1996*

**ABSTRACT.** Recent studies of the biochemistry of cell cycle progression have led to the discovery of a group of small proteins called cyclin-dependent-kinase inhibitors (CDK-I), CDK-Is. These proteins interact with and inhibit the activity of cyclin/cyclin-dependent-kinases complexes and act as a brake on cell cycle progression. Some of these small proteins such as *p16* and *p15* genes appear to behave as tumor suppressor genes in a variety of neoplasms, including hematological malignancies. Numerous studies have been published regarding the inactivation of these genes in human malignant neoplasms. In hematological malignancies, homozygous deletion is a frequent mechanism of inactivation of *p16* and *p15* in acute lymphocytic leukemias with immature blasts, particularly in those with T-cell phenotypes. In this manuscript, we have presented the results of investigations performed in the Hematopathology Section of the Laboratory of Pathology, National Cancer Institute and summarized the existing literature concerning the abnormalities *p16* and/or *p15* genes in hematological malignancies and solid tumors. We have also reviewed literature that suggests that hypermethylation of the 5'CpG island of the *p16* gene may also result in transcriptional silencing of the gene and lead to its functional inactivation. The combined data suggests that the CDK-I genes play an important role in the genesis of acute lymphoid leukemias as well as in the genesis of other types of solid tumors, through at least three different mechanisms of gene inactivation. Nonetheless, additional studies are necessary to further define the biologic role of these genes in human cancers, and to elucidate the clinical consequences of alterations of these genes in human cancers.

**Key words:** cyclin-dependent-kinase — inhibitor — hematological malignancy  
— solid tumor — tumor suppressor gene — methylation

### CYCLIN-DEPENDENT-KINASE INHIBITOR GENES

Recent advances in the molecular biology of cell cycle progression have uncovered a group of small proteins called cyclin-dependent-kinase inhibitors (CDK-Is) which interact with cyclin/cyclin-dependent-kinases (CDKs) complexes to negatively regulate progression of cells through cell cycle.<sup>1-7)</sup> These CDK-Is can be divided into two families, one whose members inhibit cyclin/

CDK kinase activity through the formation of a ternary cyclin/CDK/CDK-I complex, and a second whose members inhibit cyclin/CDK kinase activity by preventing the formation of the initial cyclin/CDK complex by competitively binding the CDK subunits.<sup>8-13)</sup> The former CDK-I family includes *p21*,<sup>14)</sup> *p27*,<sup>15,16)</sup> and *p57*.<sup>18,19)</sup> The latter family consists of *p16*,<sup>20)</sup> *p19*<sup>ARF</sup>,<sup>21)</sup> *p15*,<sup>22)</sup> *p18*,<sup>23)</sup> and *p19*.<sup>24,25)</sup> This latter family has been designated the INK4 family (inhibitor of CDK4) because its members preferentially bind to CDK4 to inhibit the enzymatic activity of the cyclin D/CDK4 complex.<sup>7,8,10-12)</sup>

The members of *p21* family bind a wide variety of cyclin/CDK complexes. *p21*<sup>14)</sup> (also known as *Sdi1*,<sup>26,27)</sup> *WAF1*,<sup>28)</sup> *Cip1*,<sup>29)</sup> or *CAP20*,<sup>30)</sup> located at chromosome 6p21.2,<sup>28)</sup> inhibits the activities of cyclin D/CDK4, cyclin E/CDK2, and cyclin A/CDK2 complexes. *p21* is also a target of the p53 tumor suppressor gene. The *p21* promoter contains a p53 binding site, and *p21* expression is induced by the wild type but not mutant type p53 gene.<sup>31-33)</sup> In addition, *p21* can inhibit DNA replication in the absence of cyclin/CDK by binding to PCNA (proliferating cell nuclear antigen) and, thereby, inhibiting the activity of DNA polymerase  $\delta$ .<sup>34-36)</sup> Thus, *p21* appears to function in the response to DNA damage through its ability to interfere with cyclin/CDK activities during the G1 phase of the cell cycle and by blocking DNA synthesis during S phase, allowing cells to repair DNA damage.

*p27*, also known as *Kip1*,<sup>16,17)</sup> is located on chromosome 12p13.<sup>37-40)</sup> A 60 amino acid (AA) segment at the terminal end of *p27* is 44% identical to the corresponding sequences of *p21*. *p27* binds preferentially to already formed cyclin/CDK complexes rather than CDKs alone, and is capable of inhibiting the activity of cyclin D/, E/, A/, and B/CDK complexes.<sup>41-44)</sup> This gene was initially identified as a protein bound to the cyclin E/CDK3 complex in TGF $\beta$  arrested cells.<sup>45)</sup> Surprisingly, it has been recently reported that targeted disruption of the *p27* gene causes enhancement of growth of mice associated with multiorgan hyperplasia, female sterility, gigantism, and pituitary tumors. These results indicate that *p27* is critical to the normal functioning of hypothalamus-pituitary-ovarian axis.<sup>46-48)</sup>

*p57*,<sup>18,19)</sup> also known as *Kip2*, contains an amino-terminal CDK inhibitory domain homologous to both *p21* and *p27*, and is located chromosome 11p15.5. *p57* protein binds to CDK2, 3, 4, and 6 and inhibits the kinase activities of cyclin D/CDK4, D/CDK6, E/CDK3, and A/CDK2 complexes.

The members of INK4 family bind to CDK4 or CDK6 but not to cyclins or other known CDKs. All five members of this family, *p16* (INK4a, CDKN2, MTS1) *p19*<sup>ARF</sup>, *p15* (INK4b, MTS2), *p18* (INK4c), and *p19* (INK4d), are located at chromosome 9p21,<sup>49,50)</sup> 9p21,<sup>21)</sup> 9p21,<sup>49,50)</sup> 1p32,<sup>23)</sup> and 19p13,<sup>24,25)</sup> respectively. *p15* is located approximately 25 kb centromeric to the *p16* gene. Interestingly, the *p19*<sup>ARF</sup> coding sequence overlaps that of *p16*, but uses an alternative reading frame and a unique promoter.<sup>21,51)</sup> All of these genes, with the exception of *p19*<sup>ARF</sup> show structural homology to each other. In addition, all can inhibit cyclin D/CDK4 and cyclin D/CDK enzymatic activities by competing with cyclin D for binding CDK4 or 6.<sup>7,8,10-12)</sup>

Recent molecular genetic analyses have implicated *p16* and *p15* as putative tumor suppressor genes. A high frequency of homozygous deletion of both genes, and somatic mutations of *p16* have been reported in a variety of human cancer cell lines and primary tumors. However, in other tumors, somatic

mutations are infrequent, leaving some uncertainty regarding the role of the two genes as tumor suppressors (details will be discussed later). On the other hand, there have been several reports demonstrating that transfection of *p16* into cells containing wild type Rb protein leads to cell cycle arrest and growth inhibition, whereas transfection with tumor-associated mutated *p16* genes do not.<sup>51-55</sup> Moreover, Serrano et al have demonstrated that *p16* deficient mice develop spontaneous tumors at an early age, and are highly sensitive to carcinogenic treatment.<sup>57</sup> In addition, *p16*-deficient primary fibroblasts proliferate rapidly and have a high cloning efficiency. These experiments suggest that *p16* functions to suppress neoplastic growth and may play a role as a tumor suppressor gene *in vivo*.

The *p16* gene contains four exons (*E1 $\alpha$* , *E1 $\beta$* , *E2* and *E3*) that generate two different types of transcripts (named *MTS1 $\alpha$*  and *MTS1 $\beta$* ), each initiated from distinct promoters associated with *E1 $\alpha$* , *E1 $\beta$* .<sup>21,22,58-60</sup> The *MTS1 $\alpha$*  transcript utilizes *E1 $\alpha$* , *E2* and *E3* and encodes *p16* INK4a, whereas the *MTS1 $\beta$*  transcript utilizes a novel 5' exon (*E1 $\beta$* ), *E2* and *E3*. Splicing of *E1 $\beta$*  into *E2* generates an alternative reading frame which results in a novel gene encoding a 132 amino acid polypeptide (*p19<sup>ARF</sup>*) that shows no structural homology to *p16* INK4a.

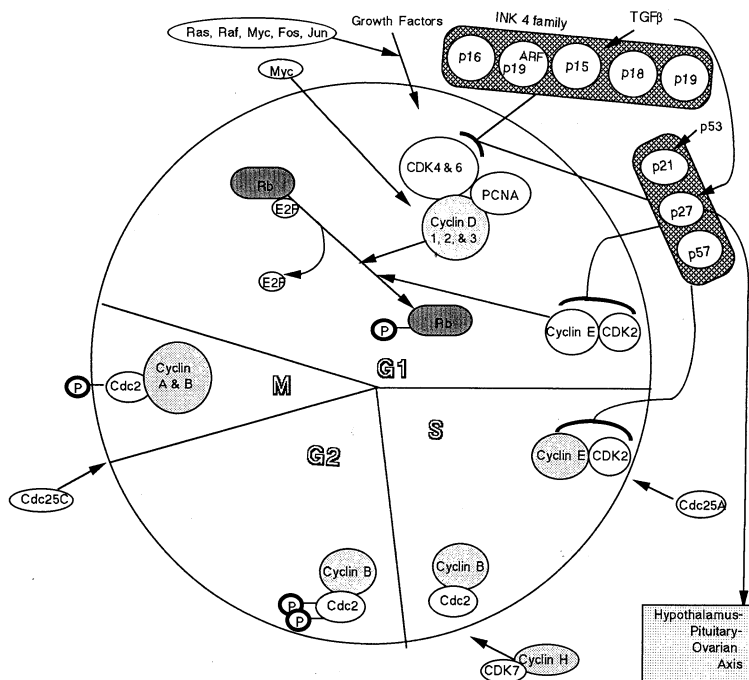


Fig 1. Schematic model of cell cycle progression depicting the interaction among cyclins, cyclin-dependent-kinase (CDK), INK4 family CDK-inhibitors (CDK-I) (*p16*, *p15*, *p18*, and *p19*), p21 family CDK-Is (*p21*, *p27*, *p57*), retinoblastoma gene, other c-oncogenes, and growth factors.

*p15* was initially identified as a protein associated with CDK4 in TGF $\beta$ -arrested cells and sharing 50% identity with *p16*.<sup>22</sup> *p18* and *p19* were

identified as CDK4 or 6 binding proteins. They also interfere with the formation of the activated cyclin/CDK complexes. *p18* shares 38% amino acid identity with *p16* over a 150 AA-region, and 42% identity with *p15* over a 129 amino acid-region.<sup>23)</sup> *p19* shares a similar degree of structural homology to *p15* and *p16*.<sup>24,25)</sup>

As summarized in (Fig 1), the CDK-I genes seem to play an important role not only in cell cycle progression but also tumorigenesis in human cancers, including hematological malignancies.

#### INVOLVEMENT OF INK4 FAMILY CDK-IS IN HEMATOLOGICAL MALIGNANCIES

##### Deletional and mutational analyses performed in Section of Hematopathology, Laboratory of Pathology, National Cancer Institute<sup>61,62)</sup>

**Cell lines studied.** Fourteen human hematological malignant cell lines were studied. These included 6 B-cell derived cell lines (2 EBV transformed lymphoid cell lines [SB and RPMI-8392], 1 null ALL cell line [NALL], 2 Burkitt's lymphoma cell lines [Raji and Dandi], 1 anaplastic large cell line [SU-DHL-1], 4 T-ALL lines [CEM, Molt4, RPMI-8402, and HSB], and 3 non-lymphoid leukemia cell lines [HL60, U937, and K562].

**Cases Studied.** A total of 117 lymphoid tumor samples from patients referred to the Hematopathology Section of the Laboratory of Pathology, National Cancer Institute were selected for these studies based on the availability of frozen tissue or previously extracted DNA for molecular analysis. Only leukemias and aggressive lymphomas with high percentages of tumor cells (> 70%) were studied to facilitate deletion interpretation. The number of tumor samples for *p16/p15* studies and *p18* study were follows;

Lineage	Tumor type	Number of cases studied	
		<i>p16/p15</i>	<i>p18</i>
T	ALL/LBL	23	18
	CLL	3	4
	PTCL	36	18
	ATL	3	0
B	CLL	37	30
	NHL	10	9
	ALL	5	2

(Abbreviations used are following; ALL, acute lymphoblastic leukemia; LBL, lymphoblastic lymphoma; CLL, chronic lymphocytic leukemia; PTCL, peripheral T-cell lymphoma; ATL, adult T-cell leukemia/lymphoma; NHL, non-Hodgkin's lymphoma)

**Southern blot analysis.** High molecular weight DNA was extracted from involved frozen tissue samples or cell suspensions using standard methods.

**Probes.** PCR derived probes to exon 2 of *p16*, exon 2 of *p15*, and exon 2 of *p18* for Southern blot analysis were generated with the following primer sets:

<i>p16</i> exon 2 probe	1p-5; 5'-GCCGTCTGCCCCTGGACCTG-3'
	1p-3; 5'-TGAGCTTTGGAAGCTCTCAG-3'
<i>p15</i> exon 2 probe	2p-5; 5'-CGATGCCTGGGGTCGTCTGC-3'
	2p-3; 5'-GCAGCACCACCAGCGTG-3'
<i>p18</i> exon 2 probe	3p-5; 5'-TTACAGACTTTGCTGGAGT-3'
	3p-3; 5'-TTATTGAAGATTTGTGGCT-3'

**SSCP (single strand conformational polymorphism)-PCR analysis.** A single primer set was used for both exon 1 $\alpha$  and 3 of *p16*. Four sets of overlapping primers were used to screen exon 2 of *p16*. One of two alternative 5'-primer sets, 3 or 4, was used to screen the central region of *p16*. Four sets were used for *p15*, with one of two alternative primer sets, 8 and 9, used to screen the central region of *p15*. Similarly, three sets of overlapping primer sets were used for *p18*. The intron 1 sequences necessary for primer selection were determined by amplifying intron 1 by an LT-PCR procedure.<sup>62)</sup>

*pl6* exon 1 $\alpha$  1-5; 5'-GGGAGCAGCATGGAGCCG-3'  
1-3; 5'-AGTCGCCCGCCATCCCT-3'

*pl6* exon 2 2-5; 5'-GGCTCTGACCATTCTGTTCTC-3'  
2-3; 5'-GTCGTGCACGGGTCTGGGTGAG-3'  
3-5; 5'-AGCCCAACTGCGCCGAC-3'  
3-3; 5'-CGCAGGTACCGTGCACATCG-3' or  
4-5; 5'-GCTGAGGAGCTGGGCCATCGC-3'  
4-3; 5'-CGCAGGTACCGTGCACATCG-3'  
5-5; 5'-CGATGCCTGGGGCCGTCTGC-3'  
5-3; 5'-TGAGCTTTGGAAGCTCTCAG-3'

*pl6* exon 3 6-5; 5'-CCGGTAGGGACGGCAAGAGA-3'  
6-3; 5'-CTGTAGGACCCTCGGTGACTGATGA-3'

*pl5* exon 2 7-5; 5'-GCCGGCATCTCCCATACCTG-3'  
7-3; 5'-ATCATGCACGGGTCTGGGTGAG-3'  
8-5; 5'-AGCCCAACTGCGCAGACCCT-3'  
8-3 and 9-3; 5'-GCGGTGGCCCCGCTCCTCGGC-3'  
9-5; 5'-CCCCACGGCGCGGAGCCCAACTG-3'  
10-5; 5'-CGATGCCTGGGGTCTGTCTGC-3'  
10-3; 5'-CGCTCCCCGTGGCAGCCTT-3'

*pl8* exon 1 11-5; 5'-TGATCGTCAGGACCCTAAA-3'  
11-3; 5'-AAAGCTGTAAATCTAGAAAC-3'

*p18* exon 2    12-5 ; 5'-ATATGCACTTGAAGGATTCT-3'  
                   12-3 ; 5'-AGGTTCCCTTCATTATCC-3'  
                   13-5 ; 5'-TTACAGACTTTGCTGGAGT-3'  
                   13-3 ; 5'-TTATTGAAGATTTGTGGCT-3'

PCRs were performed using 100 ng of genomic DNA under standard conditions. Samples were loaded onto a 6% acrylamide gel containing 10% glycerol. Gel electrophoresis were performed at 50-60W for 3-5 hours.

**Sequencing strategy.** Direct sequencing of PCR generated fragments was performed using the Sequenase PCR Product Sequencing Kit (United States Biochemical Corp, Cleveland, OH), according to the instructions supplied by the manufacture. 5-30 ng of the amplified PCR product was treated with 1 unit of Exonuclease 1 and 2 units of Shrimp Alkaline Phosphatase at 37°C for 15 minutes to remove excess primers. Following heat inactivation of the added enzymes, 0.2-0.5 pM of the PCR product was annealed with 10 pmol of the appropriate primer, and the sequencing reaction was performed with the use of [<sup>35</sup>S]dATP. Autoradiographs were developed after 1-7 days of exposure at ambient temperature.

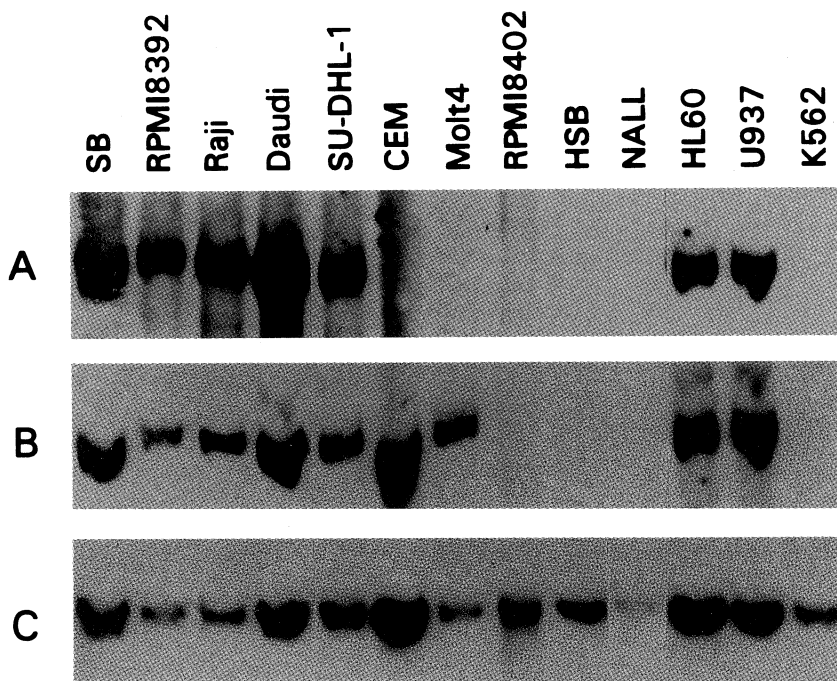


Fig 2. Southern blot analysis of hematopoietic cell lines. High molecular weight DNA from 14 cell lines were digested by *Xba* I and hybridized with PCR-generated probe for *p16* exon 2 (A), *p15* exon 2 (B), and a human *BCL-2 mbr* gene probe to estimate DNA loading (C). Four T-cell derived cell lines, one null ALL cell line, and the erythroleukemia cell line K562 show homozygous deletions of *p16* gene. Homozygous deletions of *p15* are also present in all of the *p16* deleted cell lines except CEM and Molt 4.

**Results of Southern blot analysis for deletion of INK4 family CDK-I genes.**

Homozygous deletions of *p16* were present in all four T-ALL cell lines, 1 null ALL line, and in 1 erythroleukemia cell line (Fig 2). None of the B-cell lines displayed deletions of *p16*. CEM and Molt4 retained *p15*, while the remaining 4 *p16*-deleted cell lines also had homozygous deletions of *p15*. None of cell lines studied showed deletion of *p18* (data not shown).



Fig 3. Southern blot analysis of selected T-ALL/LBL and B-ALL cases. High molecular weight DNA from 14 cell lines were digested by *EcoRI* and hybridized with PCR-generated probe for *p16* exon 2 (A), *p15* exon 2 (B), and a human *BCL-2 mbr* gene probe to estimate DNA loading (C). All the cases which showed homozygous deletion of the *p16* gene also revealed deletion of the *p15* gene.

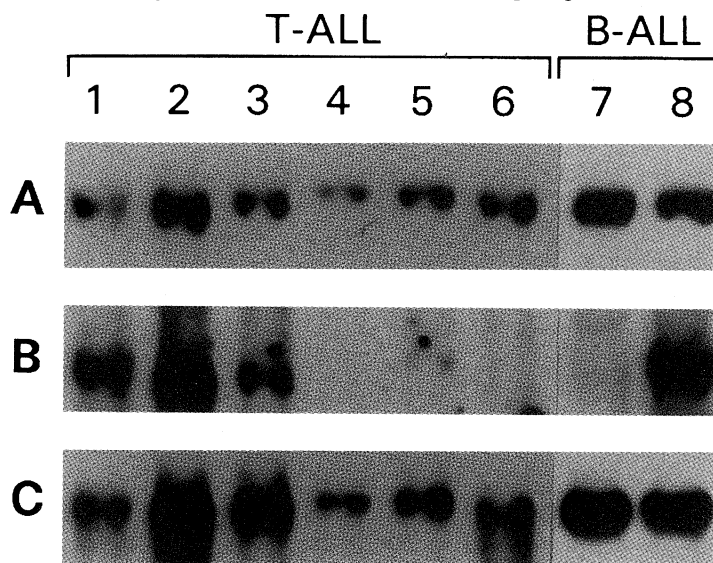


Fig 4. Southern blot analysis of selected T-ALL / LBL and precursor B-ALL cases. High molecular weight DNA from 14 cell lines were digested with *EcoRI* and hybridized with PCR-generated probe for *p16* exon 2 (A), *p15* exon 2 (B), and a human *BCL-2 mbr* gene probe to estimate DNA loading (C). Although cases 4-7 show *p16* deletions, all demonstrated the *p18* gene.

Southern blot analysis was performed on 99 of 117 cases. Homozygous deletions of *p16* occurred in 8 of 23 (35%) T-ALL/LBL cases. Deletions were also found in 1 of 3 (33%) B-ALL cases. Homozygous deletions were not detected in the other lymphoid tumors studied. All cases that showed homozygous deletions of *p16* also contained homozygous deletions of *p15*. None of lymphoid tumors studied demonstrated homozygous deletions of *p18* (Fig 4).

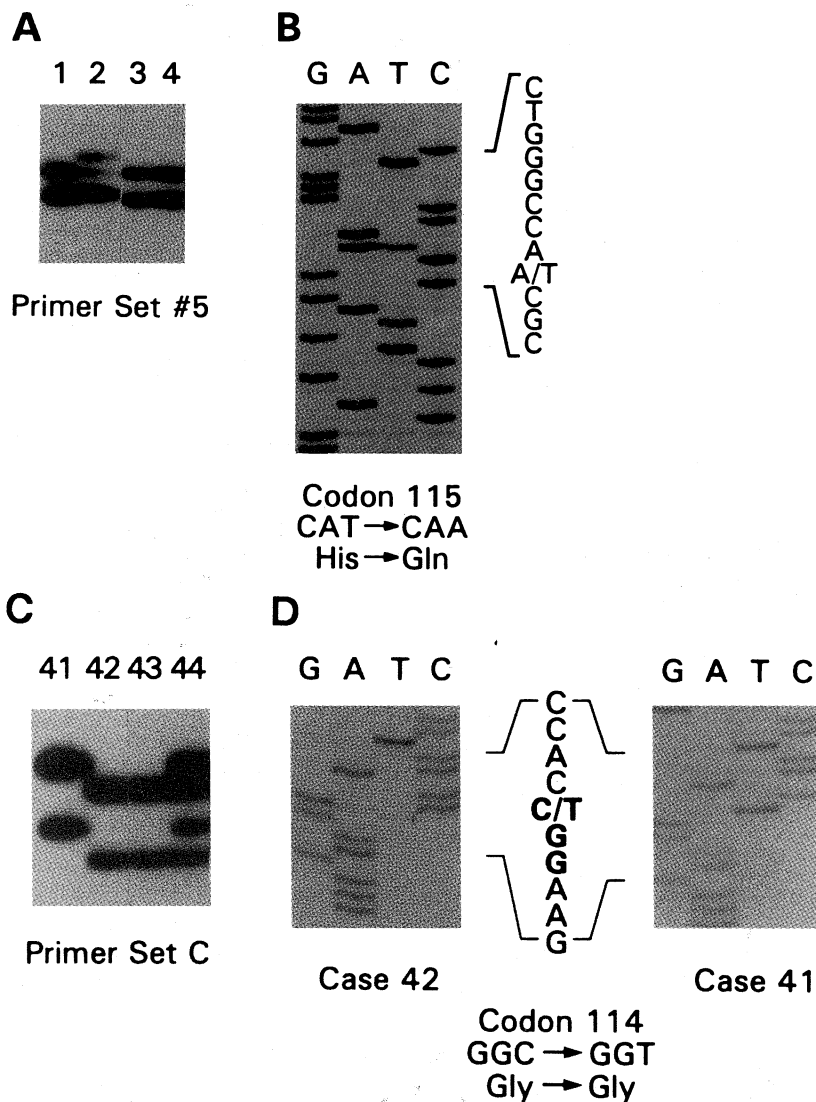


Fig 5. PCR-SSCP and sequencing analyses. A. Single abnormal conformer detected in the 3'-region of *p16* exon 2 present in one B-CLL case (lane 2). B. T→A (CAT to CAA) single nucleotide transversion in codon 115 resulting in a missense amino acid substitution changing histidine to glutamine. C. Single, recurring abnormal conformer detected in the 3' end of the *p18* gene. Homozygous pattern in lane 41, and heterozygous pattern in lane 44. D. C→T (GGC to GGT) single nucleotide transversion in codon 114, which does not result in amino acid substitution.



**SSCP analysis for mutation of INK4 family CDK-1 genes.** The coding region of exons 1 $\alpha$ , 2, and 3 of *p16*, exon 2 of *p15*, and exons 1 and 2 of *p18* were studied by SSCP-PCR. Mutations were not detected in any T-ALL/LBL, nor in any of the remaining 99 lymphoid neoplasms, with two possible exceptions. B-CLL-2 displayed an abnormal conformer in the 3' region of *p16*, (Fig 5A). Sequence analysis showed a missense mutation in codon 115 (histidine to glutamine; CAT→CAA) (Fig 5B). In addition, one T-ALL/LBL possessed a GCC→GCT (Ala→Ala) sense mutation at codon 110 of *p15*.

Two previously reported polymorphisms of *p16*, and 1 of *p18* were detected, one at codon 140 (GCG→ACG; alanine→threonine), at a frequency of 1%, one within noncoding sequences in *p16* exon 3, at a frequency of 14%, and one in *p18* codon 114 (GGC→GGT; Gly→Gly) at a frequency of 9.7% (Fig 5C, and D).

TABLE 1. Incidence of CDK inhibitor gene alterations in human lymphoid malignancies\*

Classification		Number of Cases Studied			Deletional Analysis (Southern Blot)				Mutational Analysis (SSCP)			
					Number of Deleted Cases				Number of Positive			
Lineage	Tumor Type	<i>p16</i> and <i>p15</i>	<i>p18</i>	<i>p16</i> Deletion	<i>p15</i> %	<i>p15</i> Deletion	<i>p15</i> %	<i>p18</i> Deletion	<i>p16</i> %	<i>p15</i>	<i>p18</i>	
T	ALL/LBL	23	18	8/23	34.8	8/23	34.8	0/18	0	0	1**	0
	CLL	3	4	0/2	0	0/2	0	0/4	0	0	0	0
	PTCL	36	18	0/27	0	0/27	0	0/18	0	0	0	0
	ATL	3	0	0/2	0	0/2	0			0	0	
B	CLL	37	30	0/34	0	0/34	0	0/30	0	1***	0	0
	NHL	10	9	0/10	0	0/10	0	0/9	0	0	0	0
	ALL	5	2	1/3	33.3	1/3	33.3	0/2	0	0	0	0

\*Data from Hematopathology Section, Laboratory of Pathology, National Cancer Institute, Bethesda, Maryland, USA

\*\*Sense mutation in codon 110 of *p15* gene (GCC→GCT, Ala→Ala)

\*\*\* Missense mutation in codon 115 of *p16* gene (CAT→CAA, His→Gln)

ALL, acute lymphoblastic leukemia; LBL, lymphoblastic lymphoma; CLL, chronic lymphocytic leukemia; PTCL, peripheral T-cell lymphoma; ATL, adult T-cell leukemia/lymphoma; NHL, non-Hodgkin's lymphoma.

All cases examined for *p18* gene were screened for *p16* and *p15* genes.

**Discussion on the results from National Cancer Institute studies** (Table 1). Homozygous deletions of *p16* and *p15* were found in 35% of T-ALL/LBL and in one of three B-ALL, but not in other lymphoid neoplasms. Deletions of *p18* were not detected in any case. Mutations of *p15* and *p16* were rare, and those identified do not seem to be significant, suggesting that inactivation of these genes occurs mainly through their loss. The data are consistent with a role for *p16* and/or *p15*, but not *p18*, in the pathogenesis of acute lymphoblastic leukemia/lymphoma, particularly of T-cell phenotype.

The high incidence of homozygous deletions, and the inability to detect point mutations in either *p16* and *p15* genes leads one to consider the

possibility that more than one gene in the 9p21 locus must be inactivated to provide the leukemogenic growth advantage. A requirement for inactivation of more than one closely linked gene may favor a single multilocus deletional event over the simultaneous occurrence of inactivating point mutations occurring in several genes. This would explain the low frequency of point mutations of *p15* and *p16* in the leukemias, as well as in certain other cancers.

Conclusions from the results of National Cancer Institute studies were as follows: (1) frequent (35%) homozygous deletions of the *p16* and *p15* genes were detected in acute lymphoblastic leukemia/lymphoma, particularly of T-cell phenotype suggesting that loss of function of these genes plays an important role in the pathogenesis of ALL; (2) mutations within *p15* and *p16*, are rare in ALL, suggesting that this mechanism of gene inactivation is not prominent in ALL; (3) in other types of lymphoid tumors neither deletions nor mutations of *p15* and *p16* were identified, suggesting that these CDK-I genes are not commonly inactivated by these mechanisms in the other malignancies studied; and (4) neither deletion nor mutation of *p18* was detected in any lymphoid malignancy studied, indicating that *p18* loss (through these two mechanisms) is not associated with lymphomagenesis.

#### ALTERATION OF INK4 FAMILY CDK-I GENES IN HEMATOLOGICAL MALIGNANCIES SUMMARIZED FROM RECENT LITERATURE

##### Deletional analyses of CDK-I genes

Lymphoid neoplasms, particularly lymphoblastic leukemias and lymphomas, have been reported to exhibit abnormalities such as deletions and rearrangements at chromosome 9p21 by classical karyotypical analyses.<sup>63-69</sup> Significantly, the initial two reports identifying *p16* and *p15* as candidate tumor suppressor genes contained a total of eighteen leukemia cell lines and reported more than half of them to have homozygous loss of both *p16* and *p15*.<sup>48,50</sup> These findings lead others to examine the possibility that alterations of these genes could occur in primary hematological malignancies as well. Over the past few years, approximately thirty articles have been published, including our own, concerning the possible presence of CDK-I alterations in a variety of hematological malignancies.<sup>61,62,70-100</sup>

Table 2 (i to iv) is a summary of the published deletional analyses of *p16*, *p15* and *p18* in various hematological malignancies according to disease type. Results of deletional analyses from studies of acute lymphoblastic leukemia (ALL) are presented in Table 2-i. Homozygous deletion of *p16* and *p15* genes were frequently found in T-cell ALL/lymphoblastic lymphoma (LBL). *p16* deletions have been reported in 54.7% (162/296 cases) while *p15* deletions occurred in 50.5% (94/186 cases). The percentage of hemizygous deletions of both genes in T-ALL/LBL was less than that for homozygous deletions, occurring in 8.7% of the cases (10/115) for *p16* and 31.9% (15/47) for *p15*. B-ALL cases showed relatively less frequent homozygous deletion compared to T-ALL. *p16* was homozygously deleted in 19.5% (98/502); *p15* showed homozygous deletion in 14.3% (39 out of 272) in B-ALL. Hemizygous deletion of these genes in B-ALL occurred at a similar incidence (14.1% (30/213) for *p16* and 16.6% (25/151) for *p15*). The high incidence of *p16* and *p15* deletion in ALL is consistent with the notion that loss of function of these CDK-I

TABLE 2. Deletional analysis of INK4 family CDK-I genes in hematological malignancies

Disease :	Lineage/subtype	Total Number Studied	<i>p16</i>		<i>p15</i> Type of Deletion		<i>p18</i>	Ref. #	
			Homo	Hemi	Homo	Hemi	Homo		
(i) acute lymphoblastic leukemias									
ALL	T-cell phenotype	40	32	-	27	-	-	72	
		12	3	-	-	-	-	73	
		11	0	-	-	-	-	74	
		23	8	-	8	-	-	61	
		11	9	1	8	2	-	76	
		11	2	-	-	-	-	77	
		22	17	-	9	-	0	81	
		18	-	-	-	-	0	62	
		11	7	1	5	3	-	79	
		54	22	-	-	-	-	82	
		20	3	0	2	0	-	84	
		59	44	6	35	10	-	87	
		3	3	-	-	-	-	91	
		7	4	2	-	-	-	92	
		7	7	0	-	-	-	93	
		5	1	-	-	-	-	96	
				162/296	10/115	94/186	15/47	0/40	
				54.7%	8.7%	50.5%	31.9%	0%	
	B-cell phenotype	37	3	-	1	-	-	72	
		39	6	-	-	-	-	73	
		53	11	-	-	-	-	74	
		3	1	-	1	-	-	61	
		32	7	7	7	7	-	76	
		47	8	-	-	-	-	77	
		81	12	-	5	-	0	81	
		2	-	-	-	-	0	62	
		40	6	6	6	7	-	79	
		79	23	11	19	11	-	84	
		15	8	-	-	-	-	91	
		23	1	0	-	-	-	92	
		39	8	6	-	-	-	93	
		14	4	-	-	-	-	96	
				98/502	30/213	39/272	25/151	0/83	
			19.5%	14.1%	14.3%	16.6%	0%		
	Biphonotypic/Mixed	6	0	-	0	-	-	72	
		8	0	3	0	3	-	84	
	Undifferentiated/Null	4	2	-	2	-	-	72	
		1	0	0	0	0	-	79	
		6	4	0	4	0	-	84	
	Burkitt's type	12	0	-	-	-	-	73	
	Lineage not described	14	4	-	-	-	-	70	
		19	5	-	-	-	-	76	
		27	6	-	-	-	-	80	

TABLE 2. Deletional analysis of INK4 family CDK-I genes in hematological malignancies

Disease :	Lineage/subtype	Total Number Studied	<i>p16</i>		<i>p15</i> Type of Deletion		<i>p18</i>	Ref. #	
			Homo	Hemi	Homo	Hemi	Homo		
(ii) myelogenous leukemias									
AML		45	0	-	-	-	-	70	
		37	0	-	0	-	-	72	
		11	0	-	0	-	-	73	
		25	1	-	-	-	-	75	
		41	0	-	-	-	-	77	
		44	3	1	2	1	-	80	
		134	2	0	1	0	-	84	
		4	0	-	-	-	-	91	
		23	0	-	-	-	-	96	
			6/364	1/178	3/226	1/178	-		
MDS		28	0	-	-	-	-	73	
		22	0	-	-	-	-	77	
		13	0	0	0	0	-	80	
			0/63	*	*	*	*		
			0%						
CML	Blastic Crisis : Lymphoid	10	5	-	-	-	-	75	
		12	2	0	2	0	-	84	
		8	3	-	-	-	-	90	
			10/30	*	*	*	*		
			33.3%						
	Blastic Crisis : Non-lymphoid	24	0	-	-	-	-	75	
		18	0	0	0	0	-	84	
		9	0	-	-	-	-	90	
			0/51	*	*	*	*		
			0%						
	Blastic Crisis : Lineage not described	13	0	-	-	-	-	70	
		10	0	-	-	-	-	77	
	CML	Accelerated Phase	3	0	0	0	0	-	84
	CML	Chronic Phase	33	0	-	-	-	-	77
			28	0	0	0	0	-	84
			22	0	-	-	-	-	90
				0/83	*	*	*	*	
				0%					
		Phase not described	7	0	0	0	0	-	80
MPS		15	0	-	-	-	-	77	

plays an important role in development of leukemo-lymphomagenesis in ALL, particularly in those of T-cell lineage origin.

On the contrary, most of the published studies concerning deletion of *p16* and *p15* in myeloid leukemias, including acute myelogenous leukemia (AML), myelodysplastic syndrome (MDS), chronic myelogenous leukemia (CML), and myeloproliferative disorders (MPS), have not shown any significant occurrence

TABLE 2. Deletional analysis of INK4 family CDK- I genes in hematological malignancies

Disease :	Lineage/subtype	Total Number Studied	<i>p16</i>		<i>p15</i> Type of Deletion		<i>p18</i>	Ref. #
			Homo	Hemi	Homo	Hemi	Homo	
(iii) chronic types of lymphocytic malignancies - leukemias and others								
ATL	Acute Phase	23	4	4	4	3	-	78
	Chronic Phase	14	1	1	0	0	-	78
	Phase not described	10	1	-	1	-	-	72
		2	0	-	0	-	-	61
		14	5	0	5	0	-	84
			11/63 17.5%	5/51 9.8%	10/63 15.9%	3/51 5.9%	-	
CLL	B-cell phenotype	6	1	-	1	-	-	72
		34	0	-	-	-	-	74
		34	0	-	0	-	-	61
		30	-	-	-	-	0	62
		24	0	-	-	-	-	96
	T-cell phenotype	3	0	-	0	-	-	72
		2	0	-	0	-	-	61
		4	-	-	-	-	0	62
	Lineage not described	20	0	-	-	-	-	73
		81	1	7	1	5	-	80
		14	0	-	-	-	-	77
		15	2	0	2	0	-	84
			4/233 1.7%	7/96 7.3%	4/141 2.8%	5/96 5.2%		
	PLL	B-cell phenotype	7	0	-	-	-	-
T-cell phenotype		1	0	-	0	-	-	72
		46	0	-	-	-	-	74
CLL+PLL	B-cell phenotype	50	0	-	-	-	-	92
	T-cell phenotype	20	0	-	-	-	-	92
HCL		7	0	-	0	-	-	72
		6	0	-	-	-	-	74
		7	0	0	0	0	-	80
LGL		12	0	-	0	-	-	72
		6	0	-	-	-	-	74

of homozygous or hemizygous deletions except in the lymphoid blastic crisis of CML (33.3%: 10/30 cases) as shown in Table 2-ii.

Among the non-myeloid, non ALL lymphoid leukemias, including adult T-cell lymphoma/leukemia (ATL), chronic lymphocytic leukemia (CLL), prolymphocytic leukemia (PLL), hairy cell leukemia (HCL), and large granular cell leukemia (LGL), deletions of *p16* and *p15* genes are rare, with the exception of ATL as shown in Table 2-iii. The incidence of homozygous deletions of these genes in ATL is 17.5% for *p16* and 15.4% for *p15*. Deletion of these genes appears to be associated with the acute phase of ATL. This phenomenon seems to be similar to lymphoid blastic crisis of CML cases.

TABLE 2. Deletional analysis of INK4 family CDK-I genes in hematological malignancies

Disease :	Lineage/subtype	Total Number Studied	<i>p16</i>		<i>p15</i> Type of Deletion		<i>p18</i>	Ref. #	
			Homo	Hemi	Homo	Hemi	Homo		
(iv) chronic types of lymphocytic malignancies-lymphomas and others									
NHL	B	43	0	-	-	-	-	77	
		8	0	-	0	-	-	61	
		9	-	-	-	-	0	62	
		31	2	-	-	-	-	74	
		37	1	-	1	-	-	83	
		42	3	-	-	-	-	85	
		209	13	-	-	-	-	86	
		: LPL	6	0	-	-	-	-	96
		: MCL	2	0	-	-	-	-	96
		: BL	8	1	-	-	-	-	74
	T	7	3	-	-	-	-	74	
		27	0	-	0	-	-	61	
		18	-	-	-	-	0	62	
		16	1	-	0	-	-	83	
		Lineage not described	33	4	0	4	0	-	84
	SLVL	22	0	-	-	-	-	74	
			28/461	*	5/121	*	*		
			6.1%		4.1%				
HD		85	0	-	-	-	-	78	
Myeloma		16	0	-	-	-	-	73	

(Abbreviations used in Table 2 are following; ALL, acute lymphoblastic leukemia; AML, acute myelogenous leukemia; MDS, myelodysplastic syndrome; CML, chronic myelogenous leukemia; MPS, myeloproliferative disorders; ATL, adult T-cell leukemia/lymphoma; CLL, chronic lymphocytic leukemia; PLL, chronic prolymphocytic leukemia; HCL, hairy cell leukemia; LGL, large granular lymphocytic leukemia; NHL, non-Hodgkin's lymphoma; LPL, lymphoplasmacytoid lymphoma; MCL, mantle zone cell lymphoma; BL, Burkitt's lymphoma; SLVL, splenic lymphoma with villous lymphocytes; HD, Hodgkin's disease.)

For the non-Hodgkin's lymphomas, homozygous deletions of *p16* and *p15* genes have been reported in 6.1% and 4.1% of cases, respectively (Table 2-iv). Hodgkin's disease and multiple myeloma have not been reported to possess deletions.

The results of the published studies suggests that the *p16* and *p15* genes are frequently deleted in acute lymphocytic leukemias and in blastic phases of more chronic processes such as CML and ATL. In addition, most of the reported cases are of T-cell lineage and most cases which demonstrate homozygous deletion of the *p16* gene also show homozygous deletion of *p15* gene. On the contrary, deletions of *p16* and *p15* genes are rare among myeloid malignancies and mature types of malignant lymphocytes including most chronic leukemias, adult lymphomas, and myelomas. Hemizygous deletions of both genes occur in the same lymphoid tumors as are found homozygous deletions, although at a lower frequency. In addition, there have been no reported deletions of the *p18* gene in the few reports that have focused on this

CDK-I, and , to date, there are no published reports concerning alterations of *p19* in lymphoid neoplasms.

TABLE 3. Mutational analysis of CDK-I genes in hematological malignancies\*

Gene	Ref. #	# of Cases Studied	# of Cases Altered	Disease	Location (Codon)	Alteration	Predicted Changes
p16	73	ALL 63	1	ALL	49	GCC→GTC	Ala→Val
		AML 11					
		MDS 28					
		CLL 20					
		MM 18					
	61	ALL 28	1	B-CLL	115	CAT→CAA	His→Gln
		CLL 40					
		ATL 3					
		NHL 46					
	77	ALL 40	0				
		NHL 43					
	79	ALL 15	(Hemi. Del. Cases)				
			1	B-ALL	5' end of exon 1	7 bp insertion	frame shift
						6 bp insertion	
	80	CLL 6	(Hemi. Del. Cases)				
			1	CLL	8 bp 5' to exon 2	27 bp deletion	Splicing of exon 2
			1	CLL	90	CAC→CGC	His→Arg
					108	GAC→GTC	Asp→Val
			1	CLL	45	ATG→ACG	Met→Thr
	81	ALL 54	0				
	82	ALL 56	1	T-ALL	58	CAC→CGC	His→Arg
			1	T-ALL	50	7 bp insertion	frame shift
			1	T-ALL	63	16 bp deletion	frame shift
						5 bp insertion	
			1	T-ALL	intron 1	5 bp deletion	
					(16 bp 5' to exon 2)	9 bp insertion	
83	NHL 67	0					
84	AL 74	0					
85	NHL 52	1	B-NHL	72	CGA→CAA	Arg→Gln	
		1	B-NHL	3	35 bp deletion	frame shift	
		1	B-NHL	49	13 bp deletion	frame shift	
		1	B-NHL	intron 1	26 bp changes		
86	NHL 209	0					
87	ALL 59	2	T-ALL		point mutation		
93	ALL 6	0	(Hemi. Del. Cases.)				
94	AL 80	0					

A few articles have focused on the relationship between clinical parameters and deletions of CDK-I genes.<sup>73,77,81</sup> According to these reports, homozygous deletion of *p16* gene is associated with high leukemic cell mass, high white blood cell counts (WBC), and leukemias presenting with mediastinal mass. Homozygous deletion of *p15* has also been associated with a high WBC. On

the other hand, patient survival was not affected by the presence or absence of *p16*. These are early studies and additional studies will be necessary to completely evaluate the influence of these CDK-I inhibitor alterations on the clinical features and prognosis of patients with ALL and other diseases.

TABLE 3. Mutational analysis of CDK-I genes in hematological malignancies\*

Gene	Ref. #	# of Cases Studied	# of Cases Altered	Disease	Location (Codon)	Alteration	Predicted Changes
(continued)							
<i>p15</i>	61	ALL 28	0				
		CLL 40					
		ATL 3					
		NHL 46					
	79	ALL 15	0	(Hemi. Del. Cases)			
	81	ALL 54	0				
<i>p18</i>	83	NHL 67	0				
	86	NHL 209	0				
	94	AL 80	0				
	62	ALL 20	0				
		CLL 34					
		NHL 27	0				
	81	ALL 54	0				

\*excluding sense mutations and known polymorphisms

(Abbreviations used in Table 3 are the same as Table 2 except the following: AL, acute leukemia (lineages were not described in the original article); Hemi. Del. Cases, cases with hemizygous deletion included)

#### Mutational analyses of CDK-I genes

In contrast to the frequent deletion of *p16* and *p15* found particularly in the ALL cases, somatic mutations within both genes are rare. As shown in Table 3, point mutations in the coding region of *p16* gene have been reported in only 8 cases (4 ALL, 3 CLL, and 1 NHL). Relatively small nucleotide alterations such as insertions and deletions less than 50 nucleotides were observed in 5 (1 B-ALL, 2 T-ALL, and 2 B-NHL) cases. Three additional cases showed nucleotides changes in intron 1 of *p16* gene. There are no reports of mutations leading to amino acid substitutions for *p15* and *p18*. Thus, despite the fact that deletion of *p16* is frequent in the acute lymphocytic neoplasms, mutation of *p16* is not. This data contrasts with that seen in some cancers such as pancreatic and esophageal carcinoma, but is entirely consistent with data obtained from studies of other cancers such as breast cancer and high grade gliomas which also have a high incidence of deletion and a concomitant low incidence of mutation (see below).

#### INVOLVEMENT OF INK4 FAMILY CDK-IS IN CANCERS OTHER THAN HEMATOLOGICAL MALIGNANCIES



TABLE 4. Involvement of the p16 gene in tumors other than hematological malignancies

Tumor Type	Deletioal	Analysis		Mutational		Ref. #	
	LOH 9p	p16 Homo	Hemi	Analysis <i>p16</i>	<i>p15</i>		
Gliomas							
Ependymoma	0/1			0/1		101	
	1/2			0/2	0/2	103	
	0/5*			0/5*		113	
Astrocytoma	1/7			0/7		101	
		0/6				102	
	4/5			0/5	0/5	103	
		0/8	0/8			106	
		0/7				107	
Oligodendroglioma	0/2			0/2		101	
	3/4			0/4	0/4	103	
Oligo-astrocytoma	2/3			0/3		103	
Anaplastic astrocytoma	6/13			0/13		101	
		1/6	3/6	0/3		102	
	1/5			0/5	0/5	103	
		3/16	2/16			106	
		13/25				107	
	2/6			0/6		108	
	Glioblastoma multiforme	6/11			0/11		101
			0/9	4/9	0/7		102
		18/25			1/25	1/25	103
			9/27	3/27	1/15	0/12	105
		19/46	13/46			106	
		27/46				107	
	13/24			1/24		108	
Unclassified		6/9				112	
		26/38*		0/12*		113	
		11/32	8/32	0/32		103	
		10/45				110	
	Neuroblastoma			0/18		109	
Pituitary Tumor		3/25		0/25		111	
Head & Neck							
Squamous Cell Carcinoma		0/68		11/68		114	
		1/19		0/19		115	
Nasopharyngeal Tumor							
		0/42				117	
		2/3*		0/1*		118	
		7/20		0/13		118	
Malignant mesothelioma		15/21		0/6		119	
		5/23		0/18		120	
Melanoma							
Familial Kindreds				7/18		121	
				2/38		122	
				13/18		123	
				2/10		124	
Sporadic				0/30		125	

Data on cell lines are not shown. \*Data on Xenografts \*\*Rearrangement

TABLE 4. Involvement of the p16 gene in tumors other than hematological malignancies

Tumor Type	Deletioal LOH 9p	Analysis <i>p16</i> Homo	Hemi	Mutational Analysis <i>p16</i>	<i>p15</i>	Ref. #
(continued)						
Lung Cancer						
Non-Small Cell (NSCLC)				4/54		129
		18/27				130
		23/33				131
	13/25			1/12	0/25	132
		15/18		1/3		
		0/25		0/25	3/25	134
				19/64		136
				0/28		137
Metastatic NSCLC		4/22		6/22	5/22	134
Small Cell (SCLC)		1/5				130
		6/55				131
		0/15		0/15	0/15	134
Metastatic SCLC		0/9		0/9	0/9	134
Unclassified		8/17				138
Breast Carcinoma		0/5		0/37		139
	13/24			1/24		140
		13/20				138
Esophageal Cancer						
Squamous Cell Ca.	21/33			5/35	1/39	141
				14/27		142
				5/24		143
				4/25		144
Adenocarcinoma	7/17			1/21	1/21	141
				1/19		143
Gastric Cancer				0/19		144
Biliary Tract Cancer				14/25		146
Pancreatic Adenocarcinoma		10/27*		11/27*		148
Colorectal Tumor		0/25*		0/25*		113
		2/19				138
Renal Cell Carcinoma		1/55				149
Bladder Cancer		42/140		0/140		150
		11/110		0/110		151
			3/110**			151
				2/39		152
		5/19				138
		6/31				153
Testicular Cancer		2/42		0/42		154
Ovarian Cancer		1/21		0/21		154
		1/50		0/50		155
		16/115		0/99		157
Endometrial Cancer		1/15		0/15		154

Data on cell lines are not shown. \*Data on Xenografts \*\*Rearangement

TABLE 5. Categorization of solid tumors according to the frequency of *p16* gene deletions and mutations

	Deletions		
	frequent	infrequent	unknown
Mutations frequent	esophageal cancer (squamous cell) pancreatic cancer		melanoma(familial) biliary tract cancer
infrequent	high grade gliomas (anaplastic astrocytoma) (glioblastoma multiforme) nasopharyngeal tumor malignant mesothelioma non-small cell lung cancer breast cancer* bladder cancer	low grade gliomas pituitary tumors small cell lung cancer colorectal cancer testicular cancer ovarian cancer endometrial cancer	neuroblastoma melanoma(sporadic) gastric cancer
unknown	renal cell cancer		

As summarized in Table 4, there have been over fifty articles published concerning CDK-I alterations (primarily of *p16*) in a variety of solid tumors other than hematological malignancies.<sup>101-157</sup> These tumors can be categorized as having frequent or infrequent *p16* gene deletions or mutations, as shown in Table 5. Similar to the hematological malignancies mentioned above, most non-hematological malignancies have not exhibited high frequency of somatic mutations with a few exceptions such as esophageal squamous cancers, pancreatic adenocarcinomas, and familial melanomas. On the contrary, several types of tumors exhibit frequent homozygous deletion of *p16* gene. In particular, homozygous deletion of *p16* appears to be associated with tumors of high histologic grade,<sup>102,107,129,158,159</sup> especially in gliomas and bladder cancers. The association of *p16* deletion with high grade tumors of a particular tumor type is similar to that seen in the blastic crisis of CML or in the acute phase of ATL among the hematological malignancies. In addition, non-small cell lung cancer has a higher incidence of homozygous deletion than small cell lung cancer, perhaps analogous to the lineage differences seen between lymphoid and myeloid leukemias in the hematologic neoplasms.

Because of the low incidence of somatic mutations of *p16* and *p15* in solid tumors as well as in hematological malignancies, despite the presence of frequent homozygous deletions in these malignancies, the possibility has been raised that there may be an other candidate(s) tumor suppressor gene located at chromosome 9p21 loci nearby the *p16* and *p15* genes. Recent molecular biological investigations, however, have demonstrated that transfection of wild type-*p16* gene into malignant cell lines can cause growth suppression *in vitro*, while transfection with mutated or tumor derived *p16* genes has no effect in inhibiting growth. In addition, hypermethylation of CpG islands in promoter region of *p16* has recently been reported to be another potential mechanism to inactivate this gene. It will be necessary to investigate the several silencing mechanisms of these CDK-I genes in primary tumors and to test relationship among retinoblastoma (Rb) gene inactivation,<sup>161-167</sup> alteration of enzymatic activities of cyclin/CDK complexes, and inactivation of CDK-I genes.

### INACTIVATION OF THE *p16* GENE THROUGH METHYLATION

It has been recently reported that hypermethylation within a 5' CpG island is associated with transcriptional silencing of the *p16* gene in human cancers.<sup>168)</sup> This is interesting because numerous studies of human cancers have shown that there is an association between the methylation status of a gene and its expression status. Hypomethylation has generally been associated with gene activation while hypermethylation has been associated with gene inactivation (transcriptional silencing). For example, in addition to gene mutation, hypomethylation of the *ras* gene is associated with its transcriptional activation.<sup>169-172)</sup> Hypomethylation of other oncogenes such as *c-myc*<sup>173,174)</sup> and *bcl-2*<sup>175)</sup> have also been reported in some types of malignancies as have abnormal methylation patterns of the calcitonin gene.<sup>176-178)</sup> On the other hand, hypermethylation, leading to gene inactivation, has been reported for tumor suppressor genes such as *Rb*<sup>179,180)</sup> and *p53*.<sup>181)</sup>

The initial report which showed a relationship between hypermethylation and silencing of the *p16* gene documented that *de novo* methylation of the 5' CpG island of *p16* gene was found in approximately 20% of primary neoplasms, including non-small cell lung cancers, head and neck squamous cell carcinomas, and malignant astrocytomas.<sup>162)</sup> Thereafter, there have been several articles which have demonstrated the occurrence of hypermethylation in CDK-I genes among various types of human primary cancers including hematological malignancies.<sup>168,182-187)</sup>

TABLE 6. Frequency of *p16* gene hyper methylation in malignancies

Tumor types	Methylation <i>p16</i> exon1	Expression in methylated cases	Methylation <i>p15</i>	Ref. #
Leukemia				
ALL	0/8		4/8	186
AML	0/7		6/8	186
Glioma				
Grade II	3/14	2/3		185
III	2/12	2/2		185
IV	4/16	3/4		185
Malignant Astrocytoma	4/14		4/14	168/186
Squamous Cell Carcinoma of Head and Neck	1/4			168
Nasopharyngeal Cancer	6/27			187
non-Small Cell Lung Cancer	7/21		0/15	168/186
Small Cell Lung Cancer	0/5		0/6	168
Breast Cancer	5/16	0/5	0/16	183
Colon Carcinoma	1/10	0/1		182
	8/20	0/8	0/19	183/186
Colon Adenoma	1/6	0/1		183
Bladder Cancer	12/18	0/12		182

As shown in Table 6, 20-60% of solid tumors, including nasopharyngeal cancers, breast cancers, and bladder cancers, contained hypermethylated 5' CpG islands in the *p16* gene. Surprisingly, some colon cancers, which show a low incidence of *p16* gene deletion and mutation, have a high incidence of *p16* gene methylation.<sup>183,186)</sup>

On the other hand, in a single report to date, ALLs and AMLs have not shown hypermethylation of the *p16* gene.<sup>186)</sup> However, it is worthwhile to note that hypermethylation of the *p15* 5' CpG island was frequently detected in both leukemia types.<sup>186)</sup>

These findings indicate that hypermethylation and the consequent transcriptional silencing of the CDK-I genes, *p16* and *p15*, may be an additional mechanism of CDK-I inactivation in certain subsets of tumor types. Additional investigations examining the methylation status of the CDK-I genes in various tumor types are necessary to clarify the role of these genes in tumorigenesis.

### CONCLUSION

In this article, we have described the involvement of the INK4 family CDK-I genes in hematological malignancies, focusing on results obtained from our studies at the Hematopathology Section, Laboratory of Pathology, National Cancer Institute, Bethesda, USA. Inactivation of CDK-I genes occurs primarily through gene deletion and possibly through promoter hypermethylation, and appears to play an important role in lymphoid leukemogenesis, particularly in acute lymphocytic leukemias of T-cell phenotype, T-lymphoid blast crises of CML, and in ATL. Further cellular and molecular investigations will be required to understand the biological role of the CDK-I genes in leukemic cells. Moreover, additional clinical investigations will also be required to understand the clinical consequences of CDK-I gene alterations occurring in lymphoid malignancies and other solid tumors.

### REFERENCES

- 1) Sherr CJ: G1 phase progression: Cycling on cue. *Cell* **79**: 551-555, 1994
- 2) Pines J: Cyclins and cyclin-dependent kinases: Take your partners. *Trend Biol Sci* **18**: 195-197, 1993
- 3) Hunter T, Pines J: Cyclins and cancer II: Cyclin D and CDK inhibitors come to age. *Cell* **79**: 573-582, 1994
- 4) Hunter T: Braking the cycle. *Cell* **75**: 839-841, 1993
- 5) Nasmyth K, Hunt T: Dams and sluices. *Nature* **366**: 634-635, 1993
- 6) Weinberg RA: The retinoblastoma protein and cell cycle control. *Cell* **81**: 323-330, 1995
- 7) Hartwell LH, Kastan MB: Cell cycle control and cancer. *Science* **266**: 1821-1828, 1994
- 8) Grana X, Reddy EP: Cell cycle control in mammalian cells: role of cyclins, cyclin dependent kinases (CDKs), growth suppressor genes and cyclin-dependent kinase inhibitors (CKIs). *Oncogene* **11**: 211-219, 1995
- 9) Elledge SJ, Harper JW: Cdk inhibitors: On the threshold of checkpoints and development. *Curr Opin Cell Biol* **6**: 847-852, 1994
- 10) Hirama T, Koeffler HP: Role of cyclin-dependent kinase inhibitors in the development of cancer. *Blood* **86**: 841-854, 1995
- 11) Cordon-Cardo C: Mutation of cell cycle regulators. Biological and clinical implications for human neoplasia. *Am J Pathol* **147**: 545-560, 1995
- 12) Sherr CJ, Roberts JM: Inhibitors of mammalian G1 cyclin-dependent kinases. *Genes Develop* **9**: 1149-1163, 1995
- 13) Peter G: Stifled by inhibitions. *Nature* **371**: 204-205, 1994
- 14) Xiong Y, Hannon GJ, Zhang H, Casso D, Kobayashi R, Beach D: p21 is a universal inhibitor of cyclin kinases. *Nature* **366**: 701-704, 1993
- 15) Toyoshima H, Hunter T: p27, a novel inhibitor of G1 cyclin-cdk protein kinase activity, is related to p21. *Cell* **78**: 67-74, 1994
- 16) Polyak K, Lee M-H, Erdjument-Bromage H, Koff A, Roberts JM, Tempst P,

- Massague J: Cloning of p27<sup>Kip1</sup>, a cyclin-dependent kinase inhibitor and a potential mediator of extracellular antimitogenic signals. *Cell* **78**: 59-66, 1994
- 17) Polyak K, Kato J-Y, Solomon MJ, Sherr CJ, Massague J, Roberts JM, Koff A: p27<sup>Kip1</sup>, a cyclin-cdk inhibitor, links transforming growth factor- $\beta$  and contact inhibition to cell cycle arrest. *Genes Develop* **8**: 9-22, 1994
  - 18) Lee M-H, Reynisdottir I, Massague J: Cloning of p57<sup>KIP2</sup> a cyclin-dependent kinase inhibitor with unique domain structure and tissue distribution. *Genes Develop* **9**: 639-649, 1995
  - 19) Matsuoka S, Edwards MC, Bai C, Parker S, Zhang P, Baldini A, Harper JW, Elledge SJ: p57<sup>KIP2</sup> a structurally distinct member of the p21<sup>CIP1</sup> Cdk inhibitor family, is a candidate tumor suppressor gene. *Genes Develop* **9**: 650-662, 1995
  - 20) Serrano M, Hannon GJ, Beach D: A new regulator motif in cell-cycle control causing specific inhibition of cyclin D/CDK4. *Nature* **366**: 704-707, 1993
  - 21) Quelle DE, Zindy F, Schmun RA, Sherr CJ: Alternative reading frames of the INK4a tumor suppressor gene encode two unrelated proteins capable of inducing cell cycle arrest. *Cell* **83**: 993-1000, 1995
  - 22) Hannon GJ, Beach D: p15<sup>INK4B</sup> is a potential effector of TGF- $\beta$ -induced cell cycle arrest. *Nature* **371**: 257-261, 1994
  - 23) Guan N-L, Jenkins CW, Li Y, Nichols MA, Wu X, O'Keefe CL, Matera AG, Xiong Y: Growth suppression by p18, a p16<sup>INK4/MTS1</sup>- and p14<sup>INK4B/MTS2</sup>-related CDK6 inhibitor, correlates with wild-type pRb function. *Genes Develop* **8**: 2939-2952, 1994
  - 24) Hirai H, Roussel MF, Kato J-Y, Ashmun RA, Sherr CJ: Novel INK4 protein, p19 and p18, are specific inhibitors of the cyclin D-dependent kinases CDK4 and CDK6. *Mol Cell Biol* **15**: 2672-2681, 1995
  - 25) Chan FKM, Zhang J, Cheng L, Shapiro DN, Winoto A: Identification of human and mouse p19, a novel CDK4 and CDK6 inhibitor with homology to p16<sup>ink4</sup>. *Mol Cell Biol* **15**: 2682-2688, 1995
  - 26) Smith JR: Inhibitors of DNA synthesis derived from senescent human diploid fibroblasts. *Exp Gerontol* **27**: 409-412, 1992
  - 27) Noda A, Ning Y, Venable SF, Pereira-Smith OM, Smith JR: Cloning of senescent cell-derived inhibitors of DNA synthesis using an expression screen. *Exp Cell Res* **211**: 90-98, 1994
  - 28) El-Deiry WS, Tokino T, Velculescu VE, Levy DB, Parsons R, Trent JM, Lin D, Mercer WE, Kinzler KW, Vogelstein B: *WAF1*, a potential mediator of p53 tumor suppression. *Cell* **75**: 817-825, 1993
  - 29) Harper JW, Adami GR, Wei N, Keyomarsi K, Elledge SJ: The p21 cdk-interacting protein Cip1 is a potent inhibitor of G1 cyclin-dependent kinases. *Cell* **75**: 805-816, 1993
  - 30) Gu Y, Turck CW, Morgan DO: Inhibition of CDK2 activity *in vivo* by an associated 20K regulatory subunit. *Nature* **366**: 707-710, 1993
  - 31) Wagner AJ, Kokontis JM, Hay N: Myc-mediated apoptosis requires wild-type p53 in a manner independent of cell cycle arrest and the ability of p53 to induce p21<sup>waf1/cip1</sup>. *Genes Develop* **8**: 2817-2830, 1994
  - 32) Macleod HF, Sherry N, Hannon G, Beach D, Tokino T, Kinzler K, Vogelstein B, Jacks T: p53-dependent and independent expression of p21 during cell growth, differentiation, and DNA damage. *Genes Develop* **9**: 935-944, 1995
  - 33) Nakanishi M, Robertye RS, Adami GR, Pereira-Smith OM, Smith JR: Identification of the active region of the DNA synthesis inhibitory gene p21<sup>Sdi1/CIP1/WAF1</sup>. *EMBO J* **14**: 555-563, 1995
  - 34) Waga S, Hannon GJ, Beach D, Stillman B: The p21 inhibitor of cyclin-dependent kinases controls DNA replication by interaction with PCNA. *Nature* **369**: 574-578, 1994
  - 35) Luo Y, Hurwitz J, Massague J: Cell-cycle inhibition by independent CDK and PCNA binding domains in p21<sup>CIP1</sup>. *Nature* **375**: 159-161, 1995
  - 36) Li R, Waga S, Hannon GJ, Beach D, Stillman B: Differential effects by the p21 CDK inhibitor on PCNA-dependent DNA replication and repair. *Nature* **371**: 534-537, 1994
  - 37) Ponce-Castaneda MV, Lee M-H, Latres E, Polyak K, Lacombe L, Montgomery K, Mathew S, Krauter K, Sheinfeld J, Massague J, Cordon-Cardo C: p27<sup>Kip1</sup>: chromosomal mapping to 12p12-12p13.1 and absence of mutations in human tumors. *Cancer Res* **55**: 1211-1214, 1995
  - 38) Bullrich F, MacLachlan TK, Sang N, Druck T, Veronese ML, Allen SL, Chiorazzi N, Koff A, Heubner K, Croce CM, Giordano A: Chromosomal mapping of members

- of the cdc2 family of protein kinases, cdk3, cdk6, PISSLRE, and PITALRE, and a cdk inhibitor,  $p27^{Kip1}$ , to regions involved in human cancer. *Cancer Res* **55**: 1199-1205, 1995
- 39) Pietsenpol JA, Bohlander SK, Sato Y, Papadopoulos N, Liu B, Friedman C, Trasj BJ, Roberts JM, Kinzler KW, Rowley JD, Vogelstein B: Assignment of the human  $p27^{Kip1}$  gene to 12p13 and its analysis in leukemias. *Cancer Res* **55**: 1206-1210, 1995
  - 40) Takeuchi S, Mori N, Koike M, Slater J, Park S, Miller CW, Miyoshi I, Koeffler HP: Frequent loss of heterozygosity in region of the *KIP1* locus in non-small cell lung cancer: Evidence for a new tumor suppressor gene on the short arm of chromosome 12. *Cancer Res* **56**: 738-740, 1996
  - 41) Koff A, Ohtsuki M, Polyak K, Roberts JM, Massague J: Negative regulation of G1 in mammalian cells: Inhibition of cyclin E-dependent kinase by TGF- $\beta$ . *Science* **260**: 536-539, 1993
  - 42) Nourse J, Firpo E, Flanagan WM, Coats S, Polyak K, Lee M-H, Massague J, Crabtree GR, Roberts JM: Interleukin-2-mediated elimination of the  $p27^{Kip1}$  cyclin-dependent kinase inhibitor prevented by rapamycin. *Nature* **372**: 570-573, 1994
  - 43) Kato J-Y, Matsuoka M, Polyak K, Massague J, Sherr CJ: Cyclic AMP-induced G1 phase arrest mediated by an inhibitor ( $p27^{Kip1}$ ) of cyclin-dependent kinase 4 activation. *Cell* **79**: 487-496, 1994
  - 44) Pagano M, Tam SW, Theodoras AM, Beer-Romero P, Sal GD, Chau V, Yew PR, Fraetta GF, Rolfe M: Role of the ubiquitin-proteasome pathway in regulation abundance of the cyclin-dependent kinase inhibitor  $p27$ . *Science* **269**: 682-685, 1995
  - 45) Coast S, Flanagan WM, Nourse J, Roberts JM: Requirement of  $p27^{Kip1}$  for restriction point control of the fibroblast cell cycle. *Science* **272**: 877-880, 1996
  - 46) Nakayama K, Ishida N, Shirane M, Inomata A, Inoue T, Shishido N, Horii I, Loh DY, Nakayama K-I: Mice lacking  $p27^{Kip1}$  display increases body size, multiple organ hyperplasia, retinal dysplasia, and pituitary tumors. *Cell* **85**: 707-720, 1996
  - 47) Kiyokawa H, Kineman RD, Manova-Todorova KO, Soares VC, Hoffman ES, Ono M, Khanam D, Hayday AC, Frohman LA, Koff A: Enhancement growth of mice lacking the cyclin-dependent kinase inhibitor function of  $p27^{Kip1}$ . *Cell* **85**: 721-732, 1996
  - 48) Fero ML, Rivkin M, Tasch M, Porter P, Carow CE, Firpo E, Polyak K, Tsai L-H, Broudy V, Perimutter RM, Kaushansky K, Roberts JM: A syndrome of multiorgan hyperplasia with features of gigantism, tumorigenesis, and female sterility in  $p27^{Kip1}$ -deficient mice. *Cell* **85**: 733-744, 1996
  - 49) Nobori T, Miura K, Wu DJ, Lois A, Takabayashi K, Carson DA: Deletions of the cyclin-dependent kinase-4 inhibitor gene in multiple human cancers. *Nature* **368**: 753-756, 1994
  - 50) Kamb A, Gruis NA, Weaver-Feldhaus J, Liu Q, Harshman K, Tavitigian SV, Stockert E, Day III RS, Johnson BE, Skolnick MH: A cell cycle regulator potentially involved in genesis of many tumor types. *Science* **264**: 436-440, 1994
  - 51) Serrano M, Lee H-M, Chin L, Cordon-Cardo C, Beach D, DePinho RA: Role of the *INK4a* locus in tumor suppression and cell mortality. *Cell* **85**: 27-37, 1996
  - 52) Koh J, Enders GH, Dynlacht BD, Harlow E: Tumour-derived p16 alleles encoding proteins defective in cell-cycle inhibition. *Nature* **375**: 506-510, 1995
  - 53) Wolfel T, Hauer M, Schneider J, Serrano M, Wolfel C, Klehmann-Hieb E, De Plaen E, Hanken T, zum Buschenfelde K-HM, Beach D: A p16<sup>INK4a</sup>-insensitive CDK4 mutant targeted by cytolytic T lymphocytes in a human melanoma. *Science* **269**: 1281-1284, 1995
  - 54) Jin X, Nguyen D, Zhang W-W, Kyritsis AP, Roth JA: Cell cycle arrest and inhibition of tumor cell proliferation by the  $p16^{INK4}$  gene mediated by an adenovirus vector. *Cancer Res* **55**: 3250-3253, 1995
  - 55) Poulos NE, Farmer AA, Chan KWK, Stanbridge EJ: Design of a new bicistronic expression vector with demonstration of a  $p16^{INK4}$ -induced G<sub>1</sub>-S block. *Cancer Res* **56**: 1719-1723, 1996
  - 56) Lukas J, Parry D, Aagaard L, Mann DJ, Bartkova J, Stauss M, Peters G, Bartek J: Retinoblastoma-protein-dependent cell-cycle inhibition by the tumour suppressor p16. *Nature* **375**: 503-506, 1995
  - 57) Serrano M, Gomez-Lahoz E, DePinho R, Beach D, bar-Sagi D: Inhibition of Ras-induced proliferation and cellular transformation by  $p16^{INK4}$ . *Science* **267**: 249-252, 1995
  - 58) Stone S, Jiang P, Dayananth P, Tavitigian SV, Katcher H, Parry D, Peters G, Kamb A: Complex structure and regulation of the *P16 (MTS1)* locus. *Cancer Res* **55**: 2988-

- 2994, 1995
- 59) Mao L, Merlo A, Bedi G, Shapiro G1, Edwards CD, Rollins BJ, Sidransky D: A novel p16<sup>INK4A</sup> transcript. *Cancer Res* **55**: 2995-2997, 1995
- 60) Duro D, Bernard O, Valle VD, Berger R, Larson CJ: A new type pf p16<sup>INK4/MTS1</sup> gene transcript expressed in B-cell malignancies. *Oncogene* **11**: 21-29, 1995
- 61) Otsuki T, Clark HM, Wellmann A, Jaffe ES, Raffeld M: Involvement of *CDKN2* (p16<sup>INK4A</sup>/MTS1) and p15<sup>INK4B</sup>/MTS2 in human leukemias and lymphomas. *Cancer Res* **55**: 1436-1440, 1995
- 62) Otsuki T, Jaffe ES, Wellmann A, Kumar S, Condron KS, Raffeld M: Absence of p18 mutations or deletions in lymphoid malignancies. *Leukemia* **10**: 356-360, 1996
- 63) Chilcote RR, Brown E, Rowley JD: Lymphoblastic leukemia with lymphomatous features associated with abnormalities of the short arm of chromosome 9. *N Engl J Med* **313**: 286-291, 1985
- 64) Carrol AJ, Castleberry RP, Crist WM: Lack of association between abnormalities of the chromosome 9 short arm and either "lymphomatous" features or T cell phenotype in childhood acute lymphoblastic leukemia. *Blood* **69**: 735-738, 1987
- 65) Murphy SB, Raimondi SC, Rivera GK, Crone M, Dodge RK, Behm FG, Pui C-H, Williams DL: Nonrandom abnormalities of chromosome 9p in childhood acute lymphoblastic leukemia; association with high-risk clinical features. *Blood* **74**: 409-415, 1989
- 66) Diaz MO, Ziemann S, Le Beau MM, Pitha P, Smith SD, Chilcote RR, Rowley JD: Homozygous deletion of the  $\alpha$ - and  $\beta$ -interferon genes in human leukemia and derived cell lines. *Proc Natl Acad Sci USA* **85**: 5259-5263, 1988
- 67) Kaneko Y, Frizzera G, Shikano T, Kobayashi H, Maseki N, Sakurai M: Chromosomal and immunophenotypic patterns in T cell acute lymphoblastic leukemia (T ALL) and lymphoblastic lymphoma (LBL). *Leukemia* **3**: 886-892, 1989
- 68) Middleton PG, Prince RA, Williamson IK, Taylor PRA, Reid MM, Jackson GH, Karz F, Chessells JM, Proctor SJ.  $\alpha$ -interferon gene deletions in adults, children and infants with acute lymphoblastic leukemia. *Leukemia* **8**: 680-682, 1991
- 69) Diaz MO, Rubin CM, Harden A, Ziemann S, Larson RA, Le Beau MM, Rowley JD: Deletions of interferon genes in acute lymphoblastic leukemia. *N Engl J Med* **322**: 77-82, 1990
- 70) Ogawa S, Hirano N, Sato N, Takahashi T, Hangaishi A, Tanaka K, Kurokawa M, Tanaka T, Mitani K, Yazaki Y, Hirai H: Homozygous loss of the cyclin-dependent kinase-4 inhibitor (p16) gene in human leukemias. *Blood* **84**: 2431-2435, 1994
- 71) Hebert J, Cayuela JM, Berkeley J, Sigaux F: Candidate tumor-suppressor genes *MTS1* (p16<sup>INK4A</sup>) and *MTS2* (p15<sup>INK4B</sup>) display frequent homozygous deletions in primary cells from T-but not from B-cell lineage acute lymphoblastic leukemias. *Blood* **84**: 4038-4044, 1994
- 72) Cayuela JM, Hebert J, Sigaux F: Homozygous *MTS1* (p16<sup>INK4A</sup>) deletion in primary tumor cells of 163 leukemic patients. *Blood* **85**: 854, 1996 (letter)
- 73) Quesnel B, Preudhomme C, Philippe N, Vanrumbeke M, Dervite I, Iai JL, Bauters F, wattel E, Fenauz P: p16 gene homozygous deletions in acute lymphoblastic leukemia. *Blood* **85**: 657-663, 1995
- 74) Stranks G, Height SE, Mitchell P, Jadayel D, Yuille MAR, De Lord C, Clutterbuck RD, Treleaven JG, Powles RL, Nacheva E, Oscier DG, Karpas A, Lenoir GM, Smith SD, Millar JL, Catovsky D, Dyer MJDS: Deletions and rearrangements of *CDKN2* in lymphoid malignancies. *Blood* **85**: 893-901, 1995
- 75) Sill H, Goldman JM, Cross NCP: Homozygous deletions of the p16 tumor-suppressor gene are associated with lymphoid transformation of chronic myeloid leukemia. *Blood* **85**: 2013-2016, 1995
- 76) Okuda T, Shurtleff SA, Valentine MB, Raimondi SC, Head DR, Behm F, Curcio-Brint AM, Liu Q, Pui C-H, Sherr CJ, Beach D, Look AT, Downing JR: Frequent deletion of p16<sup>INK4a</sup>/MTS1 and p15<sup>INK4b</sup>/MTS2 in pediatric acute lymphoblastic leukemia. *Blood* **85**: 2321-2330, 1995
- 77) Fizzotti M, Cimino G, Pisegna S, Alimena G, Quartarone C, Mandelli F, Pelicci PG, Lo Coco F: Detection of homozygous deletions of the cyclin-dependent kinase 4 inhibitor (p16) gene in acute lymphoblastic leukemia and association with adverse prognostic features. *Blood* **85**: 2685-2690, 1995
- 78) Hatta Y, Hiramata T, Miller CW, Yamada Y, Tomonaga M, Koeffler P: Homozygous deletions of the p15 (MTS2) and p16 (CDKN2/MTS1) genes in adult T-cell leukemia. *Blood* **85**: 2699-2704, 1995
- 79) Rasool O, Heyman M, Brandtner LB, Liu Y, Grander D, Soderhall S, Einhorn S:



- p15<sup>ink4B</sup> and p16<sup>ink4A</sup> gene inactivation in acute lymphocytic leukemia. *Blood* **85**: 3431-3436, 1995
- 80) Haider MA, Cao X-B, Manshoury T, Chan LL, Glassman A, Kantarjian HM, Keating MJ, Beran MS, Alnitar M: p16<sup>ink4A</sup> and p15<sup>ink4B</sup> gene deletions in primary leukemias. *Blood* **86**: 311-315, 1995
  - 81) Tekeuchi S, Bartram CR, Seriu T, Miller CW, Tobler A, Janssen JW, Reiter A, Ludwig W-D, Zimmermann M, Schwaller J, Lee E, Miyoshi I, Koeffler HP: Analysis of a family of cyclin-dependent kinase inhibitors: p15/MTS2/INK4B, p16/MTS1/INK4A, and p18 genes in acute lymphoblastic leukemia of childhood. *Blood* **86**: 755-760, 1995
  - 82) Ohnishi H, Kawamura M, Ida K, Sheng XM, Hanada R, Nobori T, Yamamori S, Hayashi Y: Homozygous deletions of *p16/MTS1* gene are frequent but mutations are infrequent in childhood T-cell acute lymphoblastic leukemia. *Blood* **86**: 1269-1275, 1995
  - 83) Gombart AF, Morosetti R, Miller CW, Said JW, Koeffler HP: Deletions of the cyclin-dependent kinase inhibitor genes p16<sup>ink4A</sup> and p15<sup>ink4B</sup> in non-Hodgkin's lymphomas. *Blood* **86**: 1534-1539, 1995
  - 84) Ogawa S, Hangaishi A, Miyawaki S, Hirokawa S, Miura Y, Takeyama K, Kamada N, Ohtake S, Uike N, Shimazaki C, Toyama K, Hirano M, Mizoguchi H, Kobayashi Y, Furusawa S, Saito M, Emi N, Yazaki Y, Ueda R, Hirai H: Loss of the cyclin-dependent kinase 4-inhibitor (p16: MTS1) gene is frequent in and highly specific to lymphoid tumors in primary human hematological malignancies. *Blood* **86**: 1548-1556, 1995
  - 85) Uchida T, Watanabe T, Kinoshita T, Murate T, Saito H, Hotta T: Mutational analysis of the *CDKN2 (MTS1/p16<sup>ink4A</sup>)* gene in primary B-cell lymphomas. *Blood* **86**: 2724-2731, 1995
  - 86) Koduru PRK, Zariwala M, Soni M, Gong JZ, Xiong Y, Broome JD: Deletion of cyclin-dependent kinase 4 inhibitor genes p15 and p16 in non-Hodgkin's lymphoma. *Blood* **86**: 2900-2905, 1995
  - 87) Cayuela J-M, Madani A, Sanhes L, Stern M-H, Sigaux F: Multiple tumor-suppressor gene 1 inactivation is the most frequent genetic alteration in T-cell acute lymphoblastic leukemia. *Blood* **87**: 2180-2186, 1996
  - 88) Nakamaki T, Kawamata N, Schwaller J, Tobler A, Fey M, Pakkala S, Lee YY, Kim BK, Fukuchi K, Tsuruoka N, Kahan J, Miller CW, Koeffler HP: Structural integrity of the cyclin-dependent kinase inhibitor genes, p15, p16 and p18 in myeloid leukemias. *Br J Haematol* **91**: 139-149, 1995
  - 89) Siebert R, Willers CP, Schramm A, Fossa A, Dresen IMG, Uppenkamp M, Nowrousian MR, Seeber S, Opalka B: Homozygous loss of the MTS1/p16 and MTS2/p15 genes in lymphoma and lymphoblastic leukaemic cell lines. *Br J Haematol* **91**: 350-354, 1995
  - 90) Serra A, Gottardi E, Ragione FD, Saglio G, Iolascon A: Involvement of the cyclin-dependent kinase-4 inhibitor (CDKN2) gene in the pathogenesis of lymphoid blast crisis of chronic myelogenous leukaemia. *Br J Haematol* **91**: 625-629, 1995
  - 91) Iolascon A, Faienza MF, Coppola B, Ragione FD: High frequency of homozygous deletions of CDK4I gene in childhood acute lymphoblastic leukaemia. *Br J Haematol* **91**: 647-651, 1995
  - 92) Schroder M, Mathieu U, Dreyling MH, Bohlander SK, Hagemeijer A, Beverloo BH, Olopade OL, Stilgenbauer S, Fischer K, Bentz M, Lichter P, Dohner H: *CDKN2* gene deletion is not found in chronic lymphoid leukemias of B- and T-cell origin but is frequent in acute lymphoblastic leukaemia. *Br J Haematol* **91**: 865-870, 1995
  - 93) Guidal-Giroux C, Gerard B, Cave H, Duval M, Rohrlach P, Elion J, Vilmer E, Grandchamp B: Deletion mapping indicates that MTS1 is the target of frequent deletions at chromosome 9p21 in paediatric acute lymphoblastic leukaemias. *Br J Haematol* **92**: 410-419, 1996
  - 94) Faienza MF, Ragione FD, Basso G, Coppola B, Del Giudice EM, Schettini F, Iolascon A: p16<sup>ink4A</sup> gene homozygous deletions in human acute leukaemias with alterations of chromosome 9. *Br J Haematol* **93**: 632-636, 1996
  - 95) Sill H, Aguiar CT, Schmidt H, Hochhaus A, Goldman JM, Cross NCP: Mutational analysis of p15 and p16 genes in acute leukaemias. *Br J Haematol* **92**: 681-683, 1996
  - 96) Delmer A, Tang R, Senamaud-Beaufort C, Paterlini P, Brechot C, Zittoun R: Alterations of cyclin-dependent kinase 4 inhibitor (p16<sup>ink4A</sup>/MTS1) gene structure and expression in acute lymphoblastic leukemias. *Leukemia* **9**: 1240-1245, 1995
  - 97) Zhou M, Gu L, James CD, He J, Yeager AM, Smith SD, Findley HW: Homozygous

- deletions of the *CDKN2* (*MTS1/p16<sup>ink4</sup>*) gene in cell lines established from children with acute lymphoblastic leukemia. *Leukemia* **9**: 1159-1161, 1995
- 98) Chaganti SR, Gaidano G, Louie DC, Dalla-Favera R, Chaganti RSK: Diffuse large cell lymphomas exhibit frequent deletions in 9p21-22 and 9q31-34 regions. *Genes Chromosome Cancer* **12**: 32-36, 1995
  - 99) Borgonovo BL, Heyman M, Rasool O, Liu Y, Grander D, Einhorn S. *p16<sup>INK4</sup>/p15<sup>INK4B</sup>* gene inactivation is a frequent event in malignant T-cell lines. *Eur J Haematol* **56**: 313-318, 1996
  - 100) Duro D, Bernard O, Valle VD, Leblanc T, Berger R, Larson C-J: Inactivation of the *p16<sup>INK4</sup>/MTS1* gene by a chromosome translocation t (9; 14) (p21-22; q11) in an acute lymphoblastic leukemia of B-cell type. *Cancer Res* **56**: 848-854, 1996
  - 101) Sonoda Y, Yoshimoto T, Sekiya T: Homozygous deletion of the *MTS1/p16* and *MTS2/p15* genes and amplification of the *CDK4* gene in glioma. *Oncogene* **11**: 2145-2149, 1995
  - 102) Nishikawa R, Furnari FB, Lin H, Arap W, Berger MS, Caveness WK: Loss of *p16<sup>INK4</sup>* expression is frequent in high grade gliomas. *Cancer Res* **55**: 1941-1945, 1995
  - 103) Li Y-J, Hoang-Xuan K, Delattre J-Y, Poisson M, Thomas G, Hamelin R: Frequent loss of heterozygosity on chromosome 9, and low incidence of mutations of cyclin-dependent kinase inhibitors *p15* (*MTS2*) and *p16* (*MTS1*) genes in gliomas. *Oncogene* **11**: 597-600, 1995
  - 104) Giani C, Finocchiaro G: Mutation rate of the *CDKN2* gene in malignant gliomas. *Cancer Res* **54**: 6338-6339, 1994
  - 105) Moulton T, Samara G, Chung W-Y, Yuan L, Desai R, Sisti M, Bruce J, Tycko B: *MTS1/p16/CDKN2* lesions in primary glioblastoma multiforme. *Am J Pathol* **146**: 613-619, 1995
  - 106) Schmidt EE, Ichimura K, Reifenberger G, Collins VP: *CDKN2* (*p16/MTS1*) gene deletion or *CDK4* amplification occurs in the majority of glioblastomas. *Cancer Res* **54**: 6321-6324, 1994
  - 107) Walker DG, Duan W, Popovic EA, Kaye AH, Tomlinson FH, Lavin M: Homozygous deletions of the multiple tumor suppressor gene 1 in the progression of human astrocytomas. *Cancer Res* **55**: 20-23, 1995
  - 108) Ueki K, Rubio M-P, Ramesh V, Correa KM, Rutter JL, von Deimling A, Buckler AJ, Gusella JF, Louis DN: *MTS1/CDKN2* gene mutations are rare in primary human astrocytomas with allelic loss of chromosome 9p. *Hum Mol Genet* **3**: 1841-1845, 1994
  - 109) Beltinger CP, White PS, Sulman EP, Maris JM, Brodeur GM: No *CDKN2* mutations in neuroblastomas. *Cancer Res* **55**: 2053-2055, 1995
  - 110) He J, Olson JJ, James CD: Lack of *p16<sup>INK4</sup>* or retinoblastoma protein (pRb), or amplification-associated overexpression of *cdk4* is observed in distinct subsets of malignant glial tumors and cell lines. *Cancer Res* **55**: 4833-4836, 1995
  - 111) Woloschik M, Yu A, Xiao J, Post KD: Frequent loss of the *p16<sup>INK4a</sup>* gene product in human pituitary tumors. *Cancer Res* **56**: 2493-2496, 1996
  - 112) Dreyling MH, Bohlander SK, Adeyanju MO, Olopade OI: Detection of *CDKN2* deletions in tumor cell lines and primary glioma by interphase fluorescence in situ hybridization. *Cancer Res* **55**: 984-988, 1995
  - 113) Jen J, Harper JW, Bigner SH, Bigner DD, Papadopoulos N, Markowitz S, Willson JKV, Kinzler KW, Vogelstein B: Deletion of *p16* and *p15* genes in brain tumors. *Cancer Res* **54**: 6353-6358, 1994
  - 114) Zhang S-Y, Klein-Szanto AJP, Sauter ER, Shafarenko M, Mitsunaga S, Nobori T, Carson DA, Ridge JA, Goodrow TL: Higher frequency of alterations in the *p16/CDKN2* gene in squamous cell carcinoma cell lines than in primary tumors of the head and neck. *Cancer Res* **54**: 5050-5053, 1994
  - 115) Gonzalez MV, Pello MF, Lopez-Larrea C, Suarez C, Menendez MJ, Coto E: Loss of heterozygosity and mutation analysis of the *p16* (9p21) and *p53* (17p13) genes in squamous cell carcinoma of the head and neck. *Clin Cancer Res* **1**: 1043-1049, 1995
  - 116) Huang DP, Lo K-W, van Hasselt CA, Woo JKS, Choi PHK, Leung S-F, Cheung S-T, Cairns P, Sidransky D, Lee JCK: A region of homozygous deletion on chromosome 9p21-22 in primary nasopharyngeal carcinoma. *Cancer Res* **54**: 4003-4006, 1994
  - 117) Sun Y, Hildesheim A, Lanier AEP, Cao Y, Yao K-T, Raab-Traub N, Yang C-S: No point mutation but decreased expression of the *p16/MTS1* tumor suppressor gene in nasopharyngeal carcinomas. *Oncogene* **10**: 785-788, 1995
  - 118) Lo K-W, Huang DP, Lau K-M: *p16* gene alteration in nasopharyngeal carcinoma. *Cancer Res* **55**: 2039-2043, 1995

- 119) Xiao S, Li D, Vijg J, Sugarbaker DJ, Corson JM, Fletcher JA : Codeletion of *p15* and *p16* in primary malignant mesothelioma. *Oncogene* **11**: 511-515, 1995
- 120) Cheng JQ, Jhanwar SC, Klein WM, Bell DW, Lee W-C, Altomare DA, Nobori T, Olopade OL, Buckler AJ, Testa JR : *p16* alterations and deletion mapping of 9p21-p22 in malignant mesothelioma. *Cancer Res* **54**: 557-5551, 1994
- 121) Walker GJ, Hussussian CJ, Flores JF, Glendening JM, Haluska FG, Dracopoli NC, Hayward NK, Fountain JW : Mutations of the *CDKN2/p16<sup>INK4</sup>* gene in Australian melanoma kindreds. *Hum Mol Genet* **4**: 1845-1852, 1995
- 122) Kamb A, Shtuck-Eidens D, Eeles R, Liu Q, Gruis NA, Ding W, Hussey C, Tran T, Miki Y, Weaver-Feldhaus J, McClure M, Aitken JF, Anderson DE, Bergman W, Frants R, Goldgar DE, Green A, MacLennan R, Martin NG, Meyer LJ, Youl P, Zone JJ, Skolnick MH, Cannon-Albright LA : Analysis of the *p16* gene (*CDKN2*) as a candidate for the chromosome 9p melanoma susceptibility locus. *Nature Genet* **8**: 22-26, 1994
- 123) Hussussian CJ, Struewing JP, Goldstein AM, Higgins PAT, Ally DS, Sheahan MD, Clark Jr WH, Tucker MA, Dracopoli NC : Germline *p16* mutations in familial melanoma. *Nature Genet* **8**: 15-21, 1994
- 124) Borg A, Johansson U, Johannsson O, Hakansson S, Westerdahl J, Masback A, Olsson H, Ingvar C : Novel germline *p16* mutation in familial malignant melanoma in southern Sweden. *Cancer Res* **56**: 2497-2500, 1996
- 125) Ohta M, Nagai H, Shimizu M, Rasio D, Berd D, Mastrangelo M, Singh AD, Shields JA, Croce CM, Huebner K : Rarity of somatic and germline mutations of the cyclin-dependent kinase 4 inhibitor gene, *CDK4I*, in melanoma. *Cancer Res* **54**: 5269-5272, 1994
- 126) Goldstein AM, Fraser MG, Struewing JP, Hussussian CJ, Ranade K, Zametkin DP, Fontaine LS, Organic SM, Dracopoli NG, Clark Jr WH, Tucker MA : Increased risk of pancreatic cancer in melanoma-prone kindreds with *p16<sup>INK4</sup>* mutations. *N Engl J Med* **333**: 970-974, 1995
- 127) Pollock PM, Yu F, Qiu L, Parsons PG, Hayward NK : Evidence for u.v. induction of *CDKN2* mutations in melanoma cell lines. *Oncogene* **10**: 663-668, 1995
- 128) Whelan AJ, Bartsch D, Goodfellow PJ : A familial syndrome of pancreatic cancer and melanoma with a mutation in the *CDKN2* tumor suppressor gene. *N Engl J Med* **333**: 975-977, 1995
- 129) Nakagawa K, Conrad NK, Williams JP, Johnson BE, Kelley MJ : Mechanism of inactivation of *CDKN2* and *MTS2* in non-small cell lung cancer and association with advanced stage. *Oncogene* **10**: 1843-1851, 1995
- 130) Shapiro GI, Edwards CD, Kobzik L, Godleski J, Richards W, Sugarbaker DJ, Rollins BJ : Reciprocal Rb inactivation and *p16<sup>INK4</sup>* expression in primary lung cancers and cell lines. *Cancer Res* **55**: 505-509, 1995
- 131) Otterson GA, Kratzke RA, Coxon A, Kim YW, Kaye FJ : Absence of *p16<sup>INK4</sup>* protein is restricted to the subset of lung cancer lines that retains wildtype RB. *Oncogene* **9**: 3375-3378, 1994
- 132) Packenham JP, Taylor JA, White C, M, Anna CH, Barrett JC, Devereux TR : Homozygous deletions at chromosome 9p21 and mutation analysis of *p16* and *p15* in microdissected primary non-small cell lung cancer. *Clin Cancer Res* **1**: 687-690, 1995
- 133) Xiao S, Li D, Corson JM, Viljg J, Fletcher JA : Codeletion of *p15* and *p16* genes in primary non-small cell lung carcinoma. *Cancer Res* **55**: 2968-2971, 1995
- 134) Okamoto A, Hussain SP, Hagiwara K, Spillare EA, Rusin MR, Demetrick DJ, Serrano M, Hannon GJ, Shiseki M, Zariwala M, Xiong Y, Beach D, Yokota J, Harris CC : Mutations in the *p16<sup>INK4</sup>/MTS1/CDKN2*, *p15<sup>INK4B</sup>/MTS2*, and *p18* genes in primary and metastatic lung cancer. *Cancer Res* **55**: 1448-1451, 1995
- 135) Washimi O, Nagatake M, Osada H, Ueda R, Koshikawa T, Seki T, Takahashi T, Takahashi T : *In vivo* occurrence of *p16* (*MTS1*) and *p15* (*MTS2*) alterations preferentially in non-small cell lung cancers. *Cancer Res* **55**: 514-517, 1995
- 136) Hayashi N, Sugimoto Y, Tsuchiya E, Ogawa M, Nakamura Y : Somatic mutations of the MTS (multiple tumor suppressor)1/*CDK4I* (cyclin-dependent kinase-4 inhibitor) gene in human primary non-small cell lung carcinomas. *Biochem Biophys Res Commun* **202**: 1426-1430, 1994
- 137) Takeshima Y, Nishisaka T, Kawano R, Kishizuchi K, Fujii S, Kitaguchi S, Inai K : *p16/CDKN2* gene and *p53* gene alterations in Japanese non-smoking female lung adenocarcinoma. *Jpn J Cancer Res* **87**: 134-140, 1996
- 138) Geradts J, Kratzke RA, Niehans GA, Lincoln CE : Immunohistochemical detection of the cyclin-dependent kinase inhibitor 2/multiple tumor suppressor gene (*CDKN2*/

- MTS1*) product p16<sup>INK4A</sup> in archival human solid tumors: correlation with retinoblastoma protein expression. *Cancer Res* **55**: 6006-6011, 1995
- 139) Xu L, Sgroi D, Sterner CJ, Beauchamp RL, Pinney DM, Keel S, Ueki K, Rutter JL, Buckler AJ, Louis DN, Gusella JF, Ramesh V: Mutational analysis of *CDKN2* (*MTS1/p16<sup>INK4A</sup>*) in human breast carcinomas. *Cancer Res* **54**: 5262-5264, 1994
  - 140) Brenner AJ, Aldaz CM: Chromosome 9p allelic loss and *p16/CDKN2* in breast cancer and evidence of *p16* inactivation in immortal breast epithelial cells. *Cancer Res* **55**: 2892-2895, 1995
  - 141) Suzuki H, Zhou X, Yin J, Lei J, Jiang HY, Suzuki Y, Chan T, Hannon GJ, Mergner WJ, Abraham JM, Meltzer SJ: Intragenic mutations of *CDKN2B* and *CDKN2A* in primary human esophageal cancers. *Hum Mol Genet* **4**: 1883-1887, 1995
  - 142) Mori T, Miura K, Aoki T, Nishihira T, Mori S, Makamura Y: Frequent somatic mutation of *MTS1/CDK4I* (multiple tumor suppressor/cyclin-dependent kinase 4 inhibitor) gene in esophageal squamous cell carcinoma. *Cancer Res* **54**: 3396-3397, 1994
  - 143) Zhou X, tarmin L, Yin J, Jiang H-Y, Suzuki H, Rhyu M-G, Abraham JM, Meltzer SJ: The *MTS1* gene is frequently mutated in primary human esophageal tumors. *Oncogene* **9**: 3737-3742, 1994
  - 144) Igaki H, Sasaki H, Tachimori Y, Kato H, Watanabe H, Kimura T, Harada Y, Sugimura T, Terada M: Mutation frequency of the *p16/CDKN2* gene in primary cancers in the upper digestive tract. *Cancer Res* **55**: 3421-3423, 1995
  - 145) Sakata K, Tamura G, Maesawa C, Suzuki Y, Terashima M, Satoh K, Eda Y, Suzuki A, Sekiyama S, Satodate R: Loss of heterozygosity on the short arm of chromosome 9 without *p16* gene mutation in gastric carcinomas. *Jpn J Cancer Res* **86**: 333-335, 1995
  - 146) Yoshida S, Todoroki T, Ichikawa Y, Hanai S, Suzuki H, Hori M, Fukao K, Miwa M, Uchida K: Mutations of *p16<sup>INK4A</sup>/CDKN2* and *p15<sup>INK4B</sup>/MTS2* genes in biliary tract cancers. *Cancer Res* **55**: 2756-2760, 1995
  - 147) Liu Q, Yan Y-X, McClure M, Nakagawa H, Fujimura F, Rustgi AK: *MTS-1* (*CDKN2*) tumor suppressor gene deletions are a frequent event in esophagus squamous cancer and pancreatic adenocarcinoma cell lines. *Oncogene* **10**: 619-622, 1995
  - 148) Caldas C, Hahn SA, da Costa LT, Redston MS, Schutte M, Seymour AB, Weinstein CL, Hruban RH, Yeo CJ, Kern SE: Frequent somatic mutations and homozygous deletions of the *p16* (*MTS1*) gene in pancreatic adenocarcinoma. *Nature Genet* **8**: 27-32, 1994
  - 149) Kinoshita H, Yamada H, Ogawa O, Kakehi Y, Osaka M, Nakamura E, Mishima M, Habuchi T, Takahashi R, Sugiyama T, Yoshida O: Contribution of chromosome 9p21-22 deletion to the progression of human renal cell carcinoma. *Jpn J Cancer Res* **86**: 795-799, 1995
  - 150) Williamson MP, Elder PA, Shaw ME, Devlin J, Knowles MA: *p16* (*CDKN2*) is a major deletion target at 9p21 in bladder cancer. *Hum Mol Genet* **4**: 1569-1577, 1995
  - 151) Orlow I, Lacombe L, Hannon GJ, Serrano M, Pellicer I, Dalbagni G, Reuter VE, Zhang Z-F, Beach D, Cordon-Cardo C: Deletion of the *p16* and *p15* genes in human bladder tumors. *J Natl Cancer Inst* **87**: 1524-1529, 1995
  - 152) Kai M, Arakawa H, Sugimoto Y, Murata Y, Ogawa M, Nakamura Y: Infrequent somatic mutation of the *MTS1* gene in primary bladder carcinomas. *Jpn J Cancer Res* **86**: 249-251, 1995
  - 153) Spruck III CH, Gonzalez-Zulueta M, Shibata A, Simoneau AR, Lin M-F, Gonzales F, Tsai YC, Jones PA: *p16* gene in uncultured tumours. *Science* **370**: 183-184, 1994
  - 154) Hatta Y, Hirama T, Takeuchi S, Lee E, Pham E, Miller CW, Strohmeyer T, Wilczynski SP, Melmed S, Koeffler HP: Alterations of the *p16* (*MTS1*) gene in testicular, ovarian, and endometrial malignancies. *J Urol* **154**: 1954-1957, 1995
  - 155) Campbell IG, Beynon G, Davis M, Englefield P: LOH and mutation analysis of *CDKN2* in primary human ovarian cancers. *Int J Cancer* **63**: 222-225, 1995
  - 156) Kelley MJ, Otterson GA, Kaye FJ, Popescu NC, Johnson BE, Dipaolo JA: *CDKN2* in HPV-positive and HPV-negative cervical-carcinoma cell lines. *Int J Cancer* **63**: 226-230, 1995
  - 157) Schultz DC, Vanderveer L, Buetow KH, Boente MP, Ozols RF, Hamilton TC, Godwin AK: Characterization of chromosome 9 in human ovarian neoplasia identifies frequent genetic imbalance on 9q and rare alterations involving 9p, including *CDKN2*. *Cancer Res* **55**: 2150-2157, 1995
  - 158) Luca M, Xie S, Gutman M, Huang S, Bar-Eli M: Abnormalities in the *CDKN2* (*p16*

- INK4/MTS1) gene in human melanoma cells: relevance to tumor growth and metastasis. *Oncogene* **11**: 1399-1402, 1995
- 159) Reed JA, Loganzo F, Shea CR, Walker GJ, Flores JF, Glendening JM, Bogdany JK, Shiel MJ, Haluska FG, Fountain JW, Albino AP: Loss of expression of the *p16*/cyclin-dependent kinase inhibitor 2 tumor suppressor gene in melanocytic lesions correlates with invasive stage of tumor progression. *Cancer Res* **55**: 2713-2718, 1995
- 160) Cairns P, Mao L, Merlo A, Lee DJ, Schwab D, Eby Y, Tokino K, van der Riet P, Blaugrund JE, Sidransky D: Rates of *p16* (*MTS1*) mutations in primary tumors with 9p loss. *Science* **265**: 415-416, 1994
- 161) Medema RH, Herrera RE, Lam F, Weinberg RA: Growth suppression by *p16*<sup>INK4</sup> requires functional retinoblastoma protein. *Proc Natl Acad Sci USA* **92**: 6289-6293, 1995
- 162) Hara E, Smith R, Parry D, Tahara H, Stone S, Peters G: Regulation of *p16*<sup>CDKN2</sup> expression and its implication for cell immortalization and senescence. *Mol Cell Biol* **16**: 859-867, 1996
- 163) Li Y, Nicols MA, Shay JW, Xiong Y: Transcriptional repression of the D-type cyclin-dependent kinase inhibitor *p16* by the retinoblastoma susceptibility gene product pRb. *Cancer Res* **54**: 6078-6082, 1994
- 164) Parry D, Bates S, Mann DJ, Peters G: Lack of cyclin D-cdk complexes in Rb-negative cells correlates with high levels of *p16*<sup>INK4/MTS1</sup> tumour suppressor gene product. *EMBO J* **14**: 503-511, 1995
- 165) Okamoto A, Demetrick DJ, Spillare EA, Hagiwara K, Hussain SP, Bennett WP, Forrester K, Gerwin B, Serrano M, Meach D, Harris CC: Mutations and altered expression of *p16*<sup>INK4</sup> in human cancer. *Proc Natl Acad Sci USA* **91**: 11045-11049, 1994
- 166) Aagaard L, Lukas J, Bartkova J, Kjeruff A-A, Strauss M, Bartek J: Aberrations of *p16*<sup>INK4</sup> and retinoblastoma tumour-suppressor genes occur in distinct sub-sets of human cancer cell lines. *Int J Cancer* **61**: 115-120, 1995
- 167) Yeager T, Stadler W, Belair C, Puthenveetil J, Olopade O, Reznikoff C: Increased *p16* levels correlate with pRb alterations in human urothelial cells. *Cancer Res* **55**: 493-497, 1995
- 168) Merlo A, Herman JG, Mao L, Lee DJ, Gabrielson E, Burger PC, Baylin SB, Sidransky D: 5' CpG island methylation is associated with transcriptional silencing of the tumour suppressor *p16/CDKN2/MTS1* in human cancers. *Nature Med* **1**: 686-692, 1995
- 169) Feinberg AP, Vogelstein B: Hypomethylation of *ras* oncogene in primary human cancers. *Biochem Biophys Res Commun* **111**: 47-54, 1983
- 170) Feinberg AP, Vogelstein B: Hypomethylation distinguishes genes of some human cancers from their normal counterparts. *Nature* **301**: 89-91, 1983
- 171) Goelz SE, Vogelstein B, Hamilton SR, Feinberg AP: DNA from benign and malignant human colon neoplasms is hypomethylated. *Science* **228**: 187-190, 1985
- 172) Vogelstein B, Kinzler KW: The multistep nature of cancer. *Trend Genet* **9**: 138-141, 1993
- 173) Vheah MSC, Wallace CD, Hoffman RM: Hypomethylation of DNA in human cancer cells: a site-specific change in the *c-myc* oncogene. *J Natl Cancer Inst* **73**: 1057-1065, 1984
- 174) Ohtsuki T, Nishitani K, Hatamochi A, Yawata Y, Namba M: Analysis of methylation in the *c-MYC* gene in five human myeloma cell lines. *Br J Haematol* **77**: 172-179, 1991
- 175) Hanada M, Delia D, Aiello A, Stadtmauer E, Reed JC: *bcl-2* gene hypomethylation and high-level expression in B-cell chronic lymphocytic leukemia. *Blood* **82**: 1820-1828, 1993
- 176) Baylin SB, Hoppener JWM, de Rustros A, Steenberge PH, Lips CJM, Nelkin BD: DNA methylation, patterns of the calcitonin gene in human lung cancers and lymphomas. *Cancer Res* **46**: 2917-2922, 1986
- 177) Baylin SB, Fearon ER, Vogelstein B, de Bustros A, Sharkis SJ, Burke PJ, Staal SP, Nelkin BD: Hypermethylation of the 5' region of the calcitonin gene is a property of human lymphoid and acute myeloid malignancies. *Blood* **70**: 412-417, 1987
- 178) de Bustros A, Nelkin BD, Silverman A, Ehrlich G, Poiesz B, Baylin SB: The short arm of chromosome 11 is a "hot spot" for hypermethylation in human neoplasia. *Proc Natl Acad Sci USA* **85**: 5693-5697, 1988
- 179) Sakai T, Toguchida J, Ohtani N, Yandell DW, Rapaport JM, Dryja TP: Allele-specific hypermethylation of the retinoblastoma tumor-suppressor gene. *Am J Hum*

- Genet **48**: 880-888, 1991
- 180) Ohtani-Fujita N, Fujita T, Aoike A, Osifchin NE, Robbins PD, Sakai T: CpG methylation inactivates the promoter activity of the human retinoblastoma tumor-suppressor gene. *Oncogene* **8**: 1063-1067, 1993
  - 181) Magewu AN, Jones PA: Ubiquitous and tenacious methylation of the CpG site in codon 248 of the p53 gene may explain its frequent appearance as a mutational hot spot in human cancer. *Mol Cell Biol* **14**: 4225-4232, 1994
  - 182) Gonzalez-Zulueta M, Bender CM, Yang AS, Nguyen T, Beart RW, van Tornout JM, Jones PA: Methylation of the 5' CpG island of the *p16/CDKN2* tumor suppressor gene in normal and transformed human tissues correlates with gene silencing. *Cancer Res* **55**: 4531-4535, 1995
  - 183) Herman JG, Merlo A, Mao L, Lapidus RG, Issa J-PJ, Davidson NE, Sidransky D, Baylin SB: Inactivation of the *CDKN2/p16/MTS1* gene is frequently associated with aberrant DNA methylation in all common human cancers. *Cancer Res* **55**: 4525-4530, 1995
  - 184) Otterson GA, Khleif SN, Chen W, Coxon AB, Kaye F: *CDKN2* gene silencing in lung cancer by DNA hypermethylation and kinetics of p16<sup>INK4</sup> protein induction by 5-aza 2' deoxycytidine. *Oncogene* **11**: 1211-1216, 1995
  - 185) Costello JF, Berger MS, Huang H-JS, Cavenee WK: Silencing of *p16/CDKN2* expression in human gliomas by methylation and chromatin condensation. *Cancer Res* **56**: 2405-2410, 1996
  - 186) Herman JG, Jen J, Merlo A, Baylin SB: Hypermethylation-associated inactivation indicates a tumor suppressor role for *p15<sup>INK4B</sup>*. *Cancer Res* **56**: 722-727, 1996
  - 187) Lo K-W, Cheung S-T, Leung S-F, van Hasselt A, Tsang Y-S, Mak K-F, Chung Y-F, Woo JKS, Lee JCK, Huang DP: Hypermethylation of the *p16* gene in nasopharyngeal carcinoma. *Cancer Res* **56**: 2721-2725, 1996